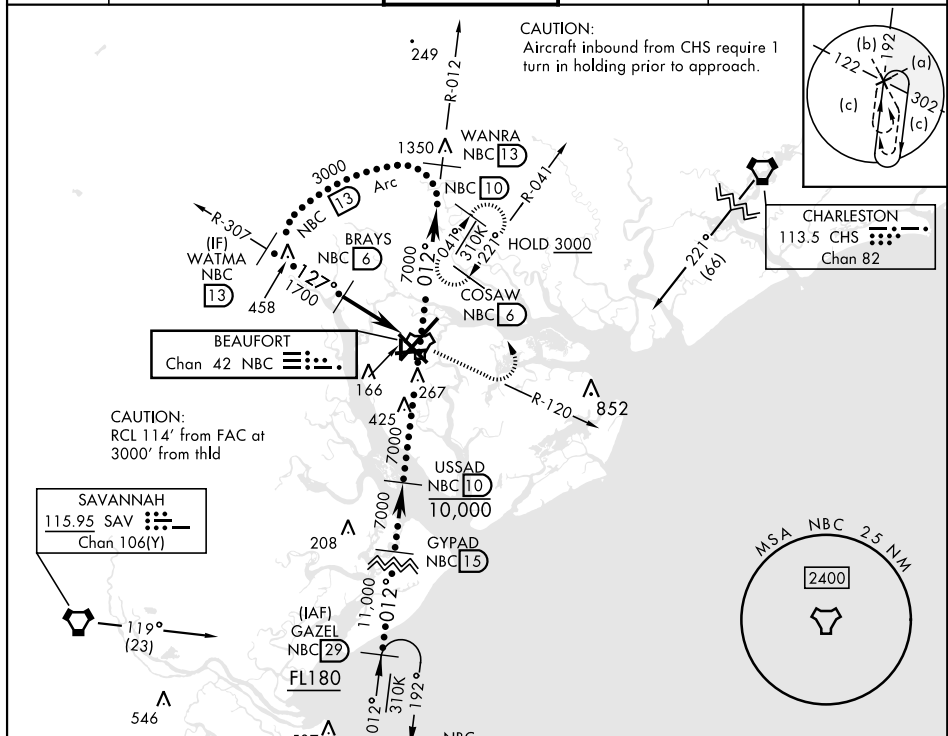


BEAUFORT, SOUTH CAROLINA

HI-TACAN Y RWY 14

TACAN NBC Chan 42		APCH CRS 127°	Rwy Idg 8000 TDZE 32 Arpt Elev 37	[USN]	BEAUFORT MCAS (MERRITT FLD) (KNBC)		
RADAR required ▼		MISSED APPROACH: Climb to 1600 on NBC TACAN R-120, then climbing left turn to 3000 via hdg 330° to intercept NBC R-041 to 6 DME (COSAW) and hold. Continue climb in hold to 3000.					
ATIS ★ 279.525	APP CON 125.125 292.125 (ABV 3000) 123.7 269.125 (3000 and BLW)		TOWER ★ 119.05 342.875		GND CON 128.15 348.625	CLNC DEL 128.15 254.375	ASR/PAR



EMERG SAFE ALT 100 NM 3100

CATEGORY	C	D	E
S-14	420-1½	388	(400-1½)
C CIRCLING	580-1½ 543 (600-1½)	600-2 563 (600-2)	740-2½ 703 (800-2½)

BEAUFORT, SOUTH CAROLINA

32° 29'N-80° 43'W

BEAUFORT MCAS (MERRITT FLD) (KNBC)

Amdt 4 11JUL24

HI-TACAN Y RWY 14