

BEAUFORT, SOUTH CAROLINA

HI-TACAN X RWY 23

TACAN NBC Chan <b>42</b>	APCH CRS <b>221°</b>	Rwy Idg <b>12,202</b> TDZE <b>16</b> Arpt Elev <b>37</b>
-----------------------------	-------------------------	--

[USN]

BEAUFORT MCAS (MERRITT FLD) (KNBC)

\* When ALS inop, increase vis to 1 mile.



**MISSED APPROACH:** Climb to 500 then climbing right turn to 3000, join NBC TACAN R-307 to direct BRAYS and hold.

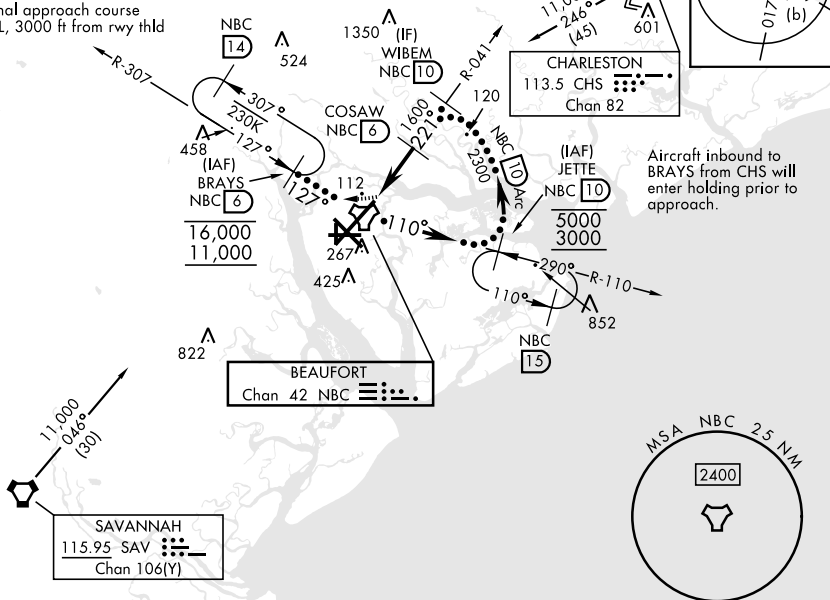
ATIS ★ 279.525	APP CON 125.125 292.125 (ABV 3000) 123.7 269.125 (3000 and BLW)	TOWER ★ 119.05 342.875	GND CON 128.15 348.625	CLNC DEL 128.15 254.375	ASR/PAR
-------------------	---	---------------------------	---------------------------	----------------------------	---------

Knots	60	120	180	240	300	360
V/V(fpm)	545	1090	1635	2180	2725	3270
Min climb of 545 ft/NM to 3000 - Controlling Obstacle Unk						

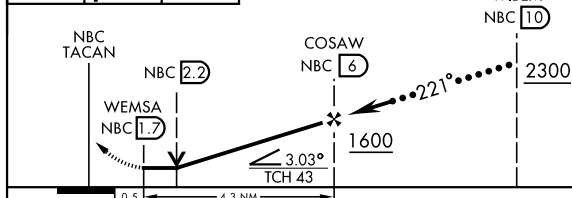
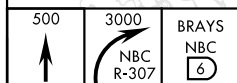
249

CAUTION: Intmed seg len 4 NM

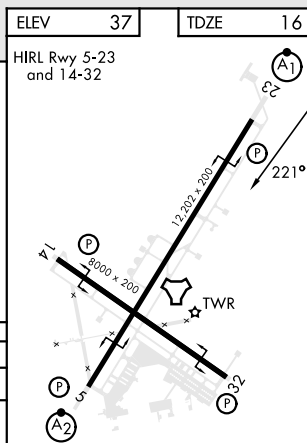
CAUTION: Final approach course  
88 ft from RCL, 3000 ft from rwy thld



EMERG SAFE ALT 100 NM 3100



CATEGORY	C	D	E
S-23 *	380- $\frac{3}{4}$	364	(400- $\frac{3}{4}$ )
<b>C</b> CIRCLING	580-1 $\frac{1}{2}$ 543 (600-1 $\frac{1}{2}$ )	600-2 563 (600-2)	740-2 $\frac{1}{2}$ 703 (800-2 $\frac{1}{2}$ )



BEAUFORT, SOUTH CAROLINA

32° 29'N-80° 43'W

BEAUFORT MCAS (MERRITT FLD) (KNBC)

Amdt 4 11JUL24

HI-TACAN X RWY 23

SE-2, 07 AUG 2025 to 04 SEP 2025

SE-2, 07 AUG 2025 to 04 SEP 2025