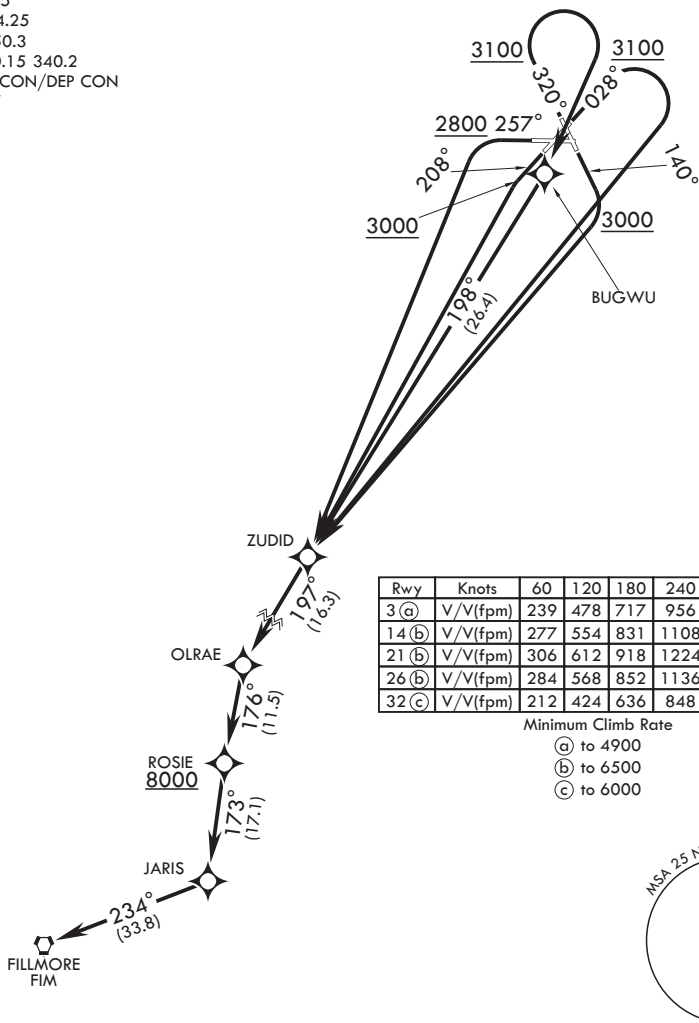


ATIS ★ 322.375  
CLNC DEL 254.25  
GND CON 350.3  
TOWER ★ 120.15 340.2  
JOSHUA APP CON/DEP CON  
133.65 348.7

RNAV1



## DEPARTURE ROUTE DESCRIPTION

TAKEOFF RWY 3: Climb heading 028° to 3100, then climbing right turn direct ZUDID. Thence...

TAKEOFF RWY 14: Climb heading 140° to 3000, then climbing right turn direct ZUDID. Thence...

TAKEOFF RWY 21: Climb heading 208° to 3000, then climbing left turn direct ZUDID. Thence...

TAKEOFF RWY 26: Climb heading 257° to 2800, then climbing left turn direct ZUDID. Thence...

**TAKEOFF RWY 32:** Climb heading 320° to 3100, then climbing right turn direct BUGWU, then direct ZUDID. Thence...

...from over ZUDID proceed via depicted route to FILLMORE VORTAC. Cross ROSIE at or above 8000 or as assigned.