

RIDGECREST, CALIFORNIA

HI-TACAN Z RWY 32

TACAN NID Chan 53	APCH CRS 313°	Rwy ldg TDZE Arpt Elev	9013 2241 2288
----------------------	------------------	------------------------------	----------------------

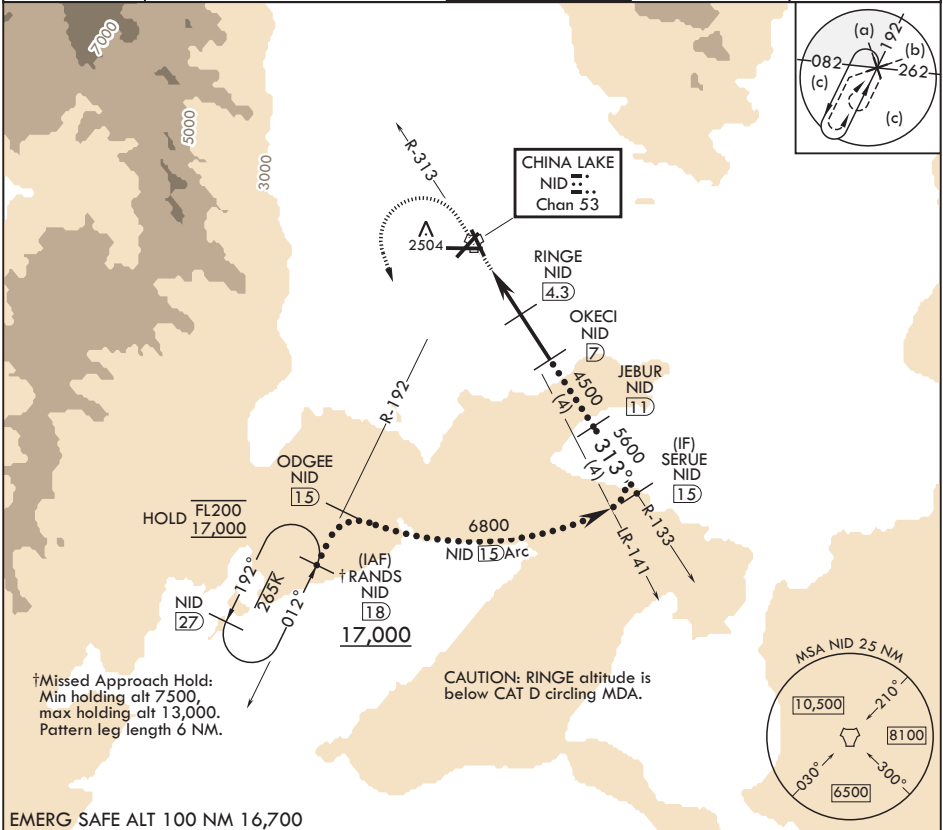
- (USN)

CHINA LAKE NAWS (ARMITAGE FLD) (KNID)

RADAR required

MISSED APPROACH: Climb to 3600, then climbing left turn to 7500 to intercept NID TACAN R-192 and RANDS and hold. Continue climb-in-hold to 7500.

ATIS★ 322.375	JOSHUA APP CON/DEP CON 133.65 348.7	TOWER★ 120.15 340.2	GND CON 350.3	CLNC DEL 254.25
------------------	--	------------------------	------------------	--------------------



EMERG SAFE ALT 100 NM 16,700

3600 NID R-192	7500 NID R-192	RANDS NID 18	VGSI and descent angles not coincident (VGSI 3.00/TCH 50).	SERUE 15	ELEV 2288	TDZE 2241
TACAN	FABAT 1.6	2.3	RINGE 4.3	OKECI 7	JEBUR 11	6800
0.7	2.7 NM	2.7 NM				
CATEGORY	C	D	E			
S-32	2740-13%	499	(500-1%)			
CIRCLING	2820-1½ 536 (600-1½)	3700-3 1416 (1500-3)	NA			

RIDGECREST, CALIFORNIA

35°41'N - 117°42'W

CHINA LAKE NAWS (ARMITAGE FLD) (KNID)

Amndt 6 12JUN25

HI-TACAN Z RWY 32

SW-3, 07 AUG 2025 to 04 SEP 2025

SW-3, 07 AUG 2025 to 04 SEP 2025