

TACAN NID
Chan 53

APCH CRS
034°

Rwy Idg 10,000
TDZE 2284
Arpt Elev 2288

[USN]

CHINA LAKE NAWs (ARMITAGE FLD)

(KNID)

RADAR required

MISSED APPROACH: Climb to 3600 then climbing right turn to 9500, intercept NID TACAN R-170 to FONOD and hold. Continue climb-in-hold to 9500.

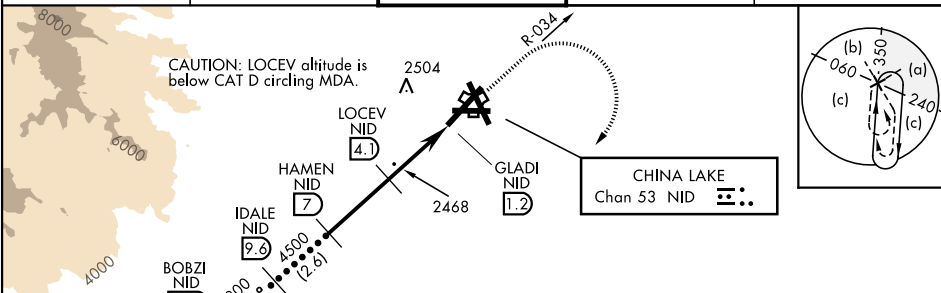
ATIS ★
322.375

JOSHUA APP/DEP CON
133.65 348.7

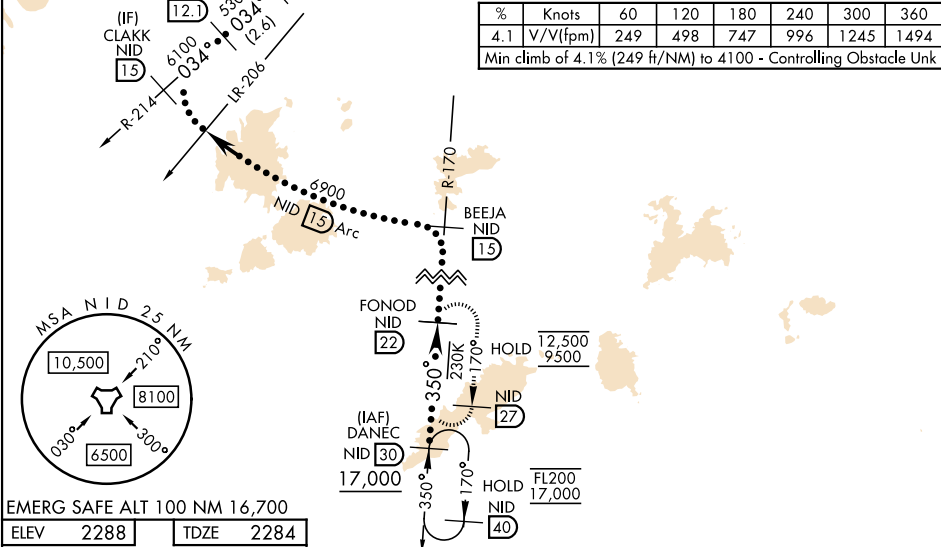
TOWER ★
120.15 340.2

GND CON
350.3

CLNC DEL
254.25



| % | Knots | 60 | 120 | 180 | 240 | 300 | 360 |
|--|----------|-----|-----|-----|-----|------|------|
| 4.1 | V/V(fpm) | 249 | 498 | 747 | 996 | 1245 | 1494 |
| Min climb of 4.1% (249 ft/NM) to 4100 - Controlling Obstacle Unk | | | | | | | |



EMERG SAFE ALT 100 NM 16,700

ELEV 2288

TDZE 2284

CLACK NID 15

BOBZI NID 12.1

IDALE NID 9.6

HAMEN NID 7

LOCEV NID 4.1

GLADI NID 1.2

FONOD NID 22

NID TACAN

3600

9500

FONOD NID 22

CLACK NID 15

BOBZI NID 12.1

IDALE NID 9.6

HAMEN NID 7

LOCEV NID 4.1

GLADI NID 1.2

FONOD NID 22

NID TACAN

CATEGORY

C

D

E

S-03 (4.1%)

2780-13½

496

(500-13½)

S-03

3080-2½

796

(800-2½)

CIRCLING

3080-2½
796 (800-2½)

3700-3
1416 (1500-3)

NOT AUTHORIZED