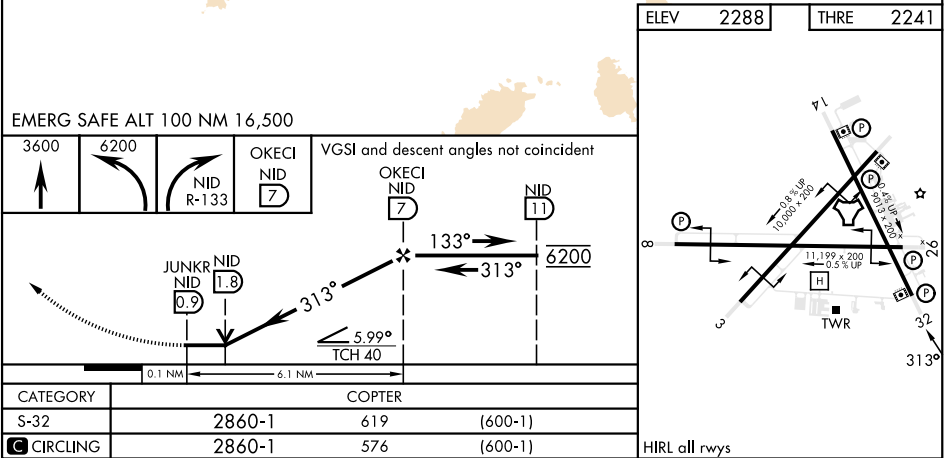
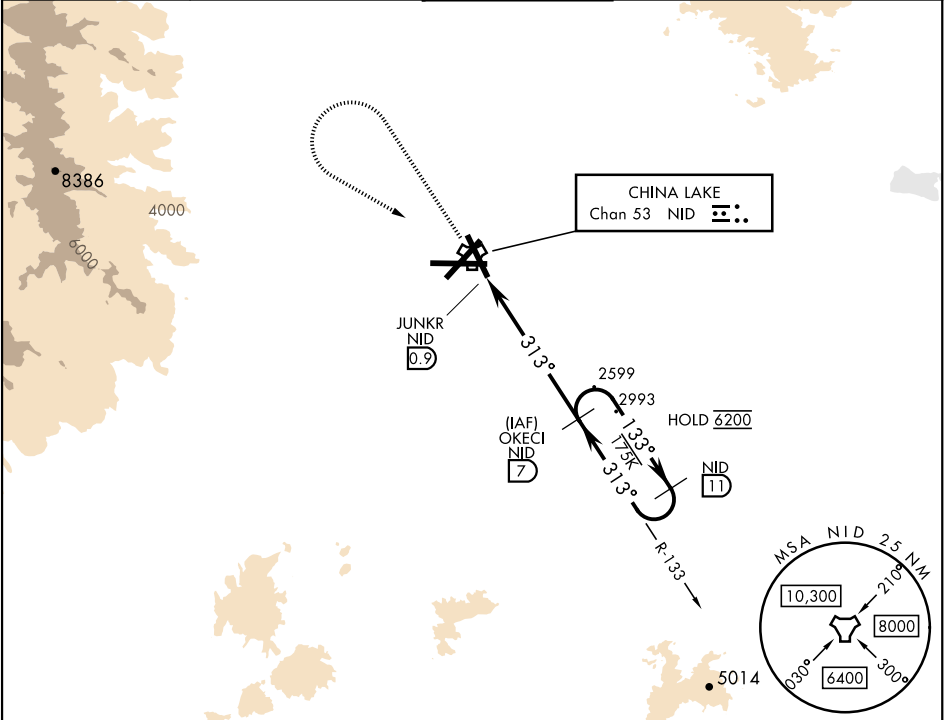


COPTER TACAN RWY 32

TACAN NID Chan 53	APCH CRS 313 °	Rwy Idg THRE 2241 Arpt Elev 2288
----------------------	-------------------	--

[USN] CHINA LAKE NAWs (ARMITAGE FLD) (KNID)

RADAR required		MISSED APPROACH: Climb to 3600, then climbing left turn to 6200, intercept NID TACAN R-133 to OKECI and hold. Continue climb in hold.		
<div><div></div></div>	Limit final approach airspeed to 80 KIAS.			
ATIS ★ 322.375	JOSHUA APP CON/DEP CON 133.65 348.7	TOWER ★ 120.15 340.2	GND CON 350.3	CLNC DEL 254.25



COPTER TACAN RWY 32

SW-3, 07 AUG 2025 to 04 SEP 2025

SW-3, 07 AUG 2025 to 04 SEP 2025