

WAAS CH <b>82616</b> <b>W31A</b>	APP CRS <b>311°</b>	Rwy Idg TDZE <b>681</b> Apt Elev <b>694</b>
--	------------------------	---

RNAV (GPS) RWY 31

LAGRANGE/CALLAWAY (LGC)

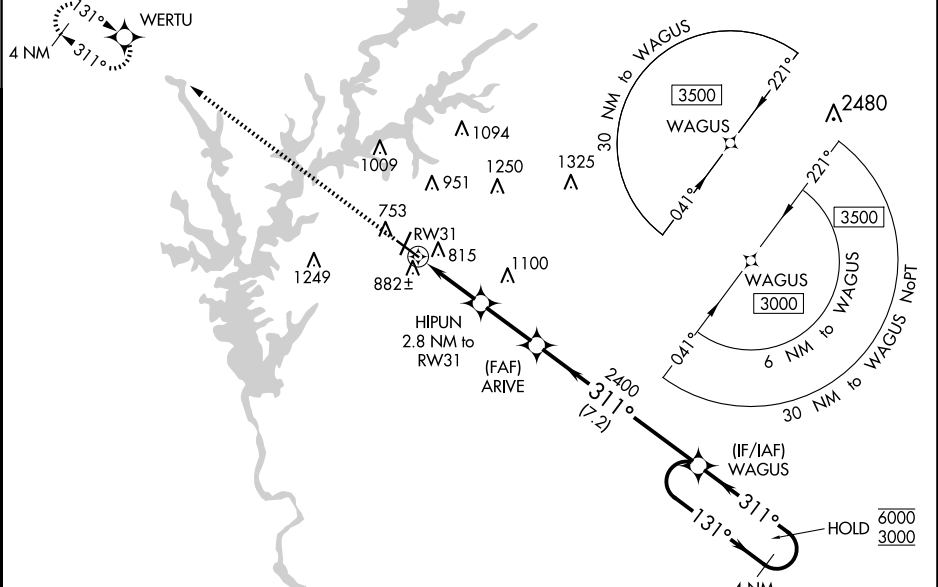
RNP APCH.

Circling Rwy 13, 21 NA at night.  
For uncompensated Baro-VNAV systems,  
LNAV/VNAV NA below -16°C or above 54°C.

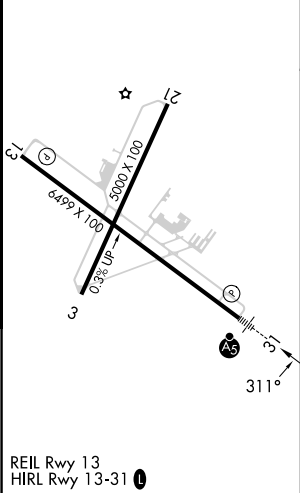
MALSR

MISSED APPROACH: Climb to 3500 direct WERTU and hold.

AWOS-3 <b>126.325</b>	ATLANTA APP CON★ <b>125.5 323.1</b>	CINC DEL <b>119.25</b>	UNICOM <b>122.975</b> (CTAF) <b>0</b>
--------------------------	--	---------------------------	--



ELEV <b>694</b>	TDZE <b>681</b>
-----------------	-----------------



	3500	WERTU							
	*LNAV only.		HIPUN 2.8 NM to RW31	ARIVE 2400	WAGUS	4 NM Holding Pattern	131° → 6000 ← 311° 3000		
			*1.3 NM to RW31				GP 3.00° TCH 41		
			1.3 NM	1.5 NM	2.5 NM	7.2 NM			
CATEGORY	A	B	C	D					
LPV DA	881-½		200 (200-½)						
LNAV/VNAV DA	1112-¾		431 (500-¾)						
LNAV MDA	1140-½	459 (500-½)	1140-⅞ 459 (500-⅞)						
CIRCLING	1280-1	586 (600-1)	1540-2½ 846 (900-2½)		1600-3 906 (1000-3)				