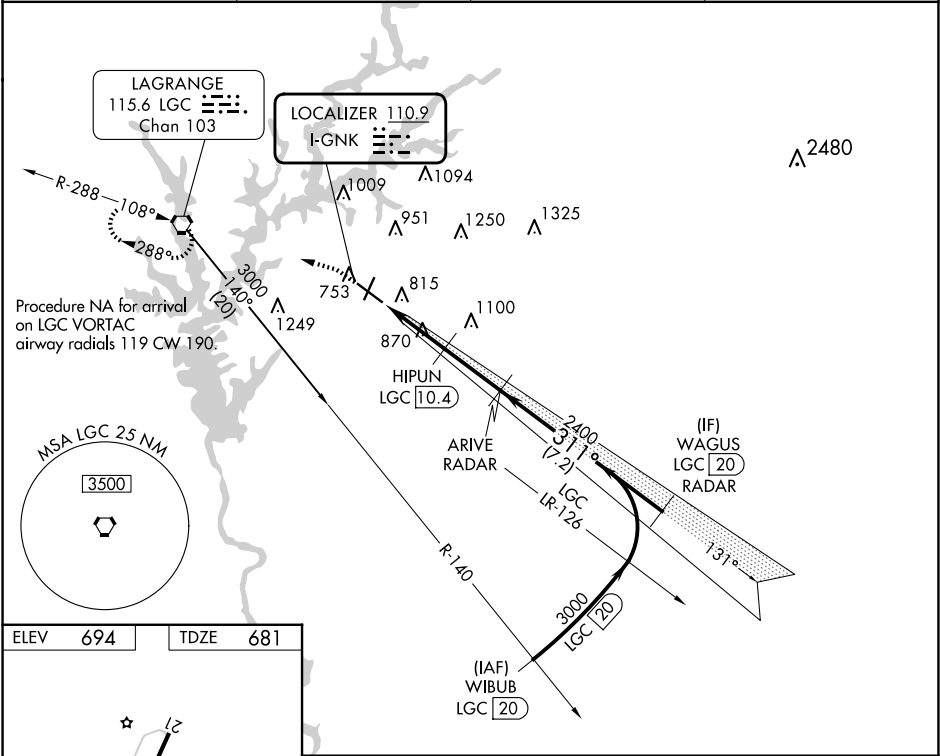


LOC I-GNK 110.9	APP CRS 311°	Rwy Idg TDZE Apt Elev 6499 681 694
---------------------------	------------------------	--

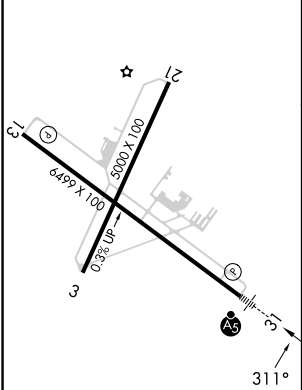
ILS or LOC RWY 31
LAGRANGE/CALLAWAY (LGC)

DME required for procedure entry. RADAR and DME required for LOC only.	MALSR 	MISSED APPROACH: Climb to 1200 then climbing left turn to 2400 direct LGC VORTAC and hold.
Circling Rwy 13, 21 NA at night. DME from LGC VORTAC. Simultaneous reception of I-GNK and LGC DME required.		

AWOS-3 126.325	ATLANTA APP CON★ 125.5 323.1	CINC DEL 119.25	UNICOM 122.975 (CTAF)
--------------------------	--	---------------------------	---------------------------------



ELEV 694	TDZE 681
--------------------	--------------------



REIL Rwy 13
HIRL Rwy 13-31

	1200	2400	LGC		WAGUS LGC (20) RADAR
	*LOC only.				
		HIPUN LGC (10.4)	ARIVE RADAR	2400	311°
		LGC (7.7)	LGC (8.9)	1600*	3000
		1.3	1.5	2.5 NM	7.2 NM
CATEGORY	A	B	C	D	
S-ILS 31		881-1/2	200 (200-1/2)		
S-LOC 31	1120-1/2	439 (500-1/2)	1120-3/4	439 (500-3/4)	
CIRCLING	1280-1	586 (600-1)	1540-2 1/2 846 (900-2 1/2)	1600-3 906 (1000-3)	

LAGRANGE, GEORGIA
Amdt 3 05DEC19

33°01'N-85°04'W

LAGRANGE/CALLAWAY (LGC)
ILS or LOC RWY 31

SE-4, 07 AUG 2025 to 04 SEP 2025

SE-4, 07 AUG 2025 to 04 SEP 2025