

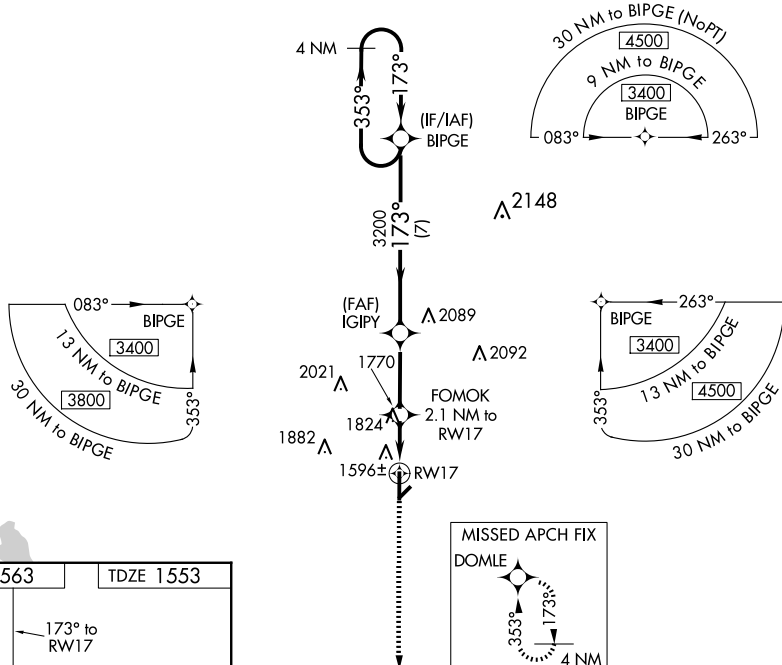
WAAS CH 99417 W17A	APP CRS 173°	Rwy Idg 5507 TDZE 1553 Apt Elev 1563
----------------------------------------	------------------------	-----------------------------------------------------------------

RNAV (GPS) RWY 17
HOBART RGNL (HBR)

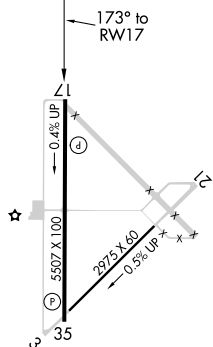
⚠ For uncompensated Baro-VNAV systems, LNAV/VNAV NA below -18°C (0°F) or above 45°C (113°F). DME/DME RNP-0.3 NA. When local altimeter setting not received, use Altus/Quartz Mountain Rgnl altimeter setting and increase all DA 71 feet and all MDA 80 feet, increase LPV and LNAV/VNAV all Cats, LNAV Cats C and D and Circling Cat C visibility ¼ mile. Baro-VNAV NA when using Altus/Quartz Mountain altimeter setting. VDP NA with Altus/Quartz Mountain altimeter setting.

MISSED APPROACH: Climb to 4000 direct DOMLE and hold.

ASOS 133.325	ALTUS APP CON ★ 125.1 353.7	UNICOM 122.8 (CTAF)
------------------------	---------------------------------------	-------------------------------



ELEV 1563		TDZE 1553
-----------	--	-----------



<div style="display: flex; justify-content: space-around; align-items: center;"> <div style="text-align: center;"> <p>4000</p> <p>↑</p> </div> <div style="text-align: center;"> <p>DOMLE</p> </div> </div>		<p>4 NM Holding Pattern</p>	
<p>*LNAV only.</p>		<p>FOMOK 2.1 NM to RW17</p> <p>IGIPY 3200</p> <p>BIPGE</p> <p>353° → 3400</p> <p>← 173°</p> <p>GP 3.00° TCH 35</p>	
<p>1.6 0.5 2.9 NM 7 NM</p>		<p>2240*</p> <p>3200</p> <p>173°</p>	
CATEGORY	A	B	C
LPV DA	1803-1 250 (300-1)		
LNAV/VNAV DA	1900-1¼ 347 (400-1¼)		
LNAV MDA	2080-1 527 (600-1)	2080-1½ 527 (600-1½)	2080-1¾ 527 (600-1¾)
CIRCLING	2080-1 517 (600-1)	2320-2¼ 757 (800-2¼)	2460-3 897 (900-3)