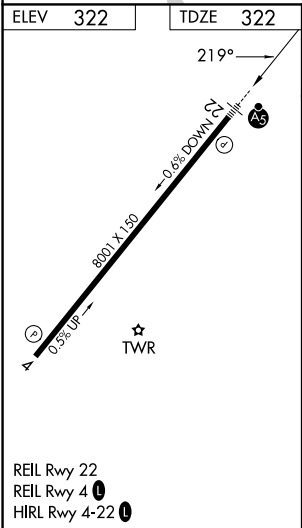
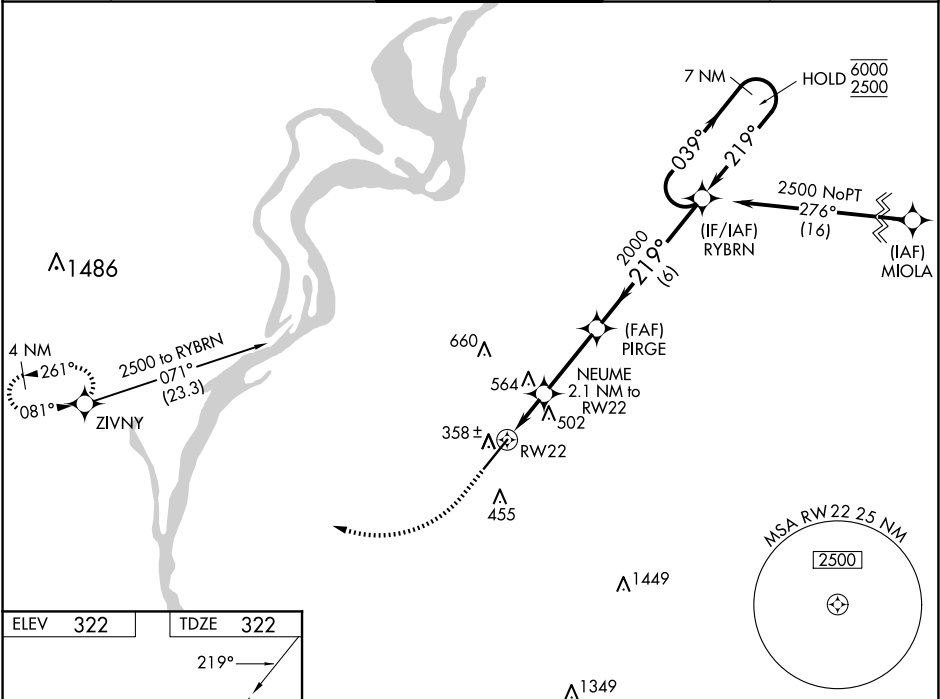





WAAS CH 86212 W22A	APP CRS 219°	Rwy Ldg TDZE 322 Apt Elev 322	8001
--	------------------------	---	-------------

RNAV (GPS) RWY 22
MILLINGTON/MEMPHIS (NQA)

RNP APCH - GPS.		MALS	MISSED APPROACH: Climb to 840 then climbing right turn to 2500 direct ZIVNY and hold.	
▼ For uncompensated Baro-VNAV systems, LNAV/VNAV NA below -15°C or above 54°C. ▲ For inop ALS, increase LPV Cat E visibility to ¾ SM, LNAV/VNAV all Cats visibility to 1¾ SM, and LNAV Cat E visibility to 1¾ SM.				
AWOS-3 118.925	MEMPHIS APP CON 119.1 291.6 125.8 338.3 (176°-355°) (356°-175°)	MILLINGTON TOWER ★ 120.25 (CTAF) 0 340.2	GND CON 121.375	UNICOM 122.95



840 ↑		2500 ↗		ZIVNY 		VGSI and RNAV glidepath not coincident (VGSI Angle 3.00/TCH 67).		7 NM Holding Pattern	
		RW22 1.2 NM		NEUME 2.1 NM to RW22		PIRGE 2000		RYBRN	
		1.2 NM to RW22		1040		219°		039° → 6000 ← 219° 2500	
		1.2 NM		0.9 NM		3 NM		6 NM	
								GP 3.00° TCH 55	
CATEGORY	A		B		C		D		E
LPV DA			522-1/2		200 (200-1/2)				
LNAV/VNAV DA			784-1		462 (500-1)				
LNAV MDA	780-1/2		458 (500-1/2)		780-7/8		458 (500-7/8)		
 CIRCLING	800-1 478 (500-1)		820-1 498 (500-1)		920-1 1/2 598 (600-1 1/2)		960-2 638 (700-2)		960-2 1/4 638 (700-2 1/4)

SE-1, 07 AUG 2025 to 04 SEP 2025

SE-1, 07 AUG 2025 to 04 SEP 2025