

LOC/DME I-NQA
109.75
Chan **34** (Y)

APP CRS
219°

Rwy Ldg
TDZE **322**
Apt Elev **322**

ILS or LOC RWY 22
MILLINGTON/MEMPHIS (NQA)

RADAR required for procedure entry. DME required.

▼

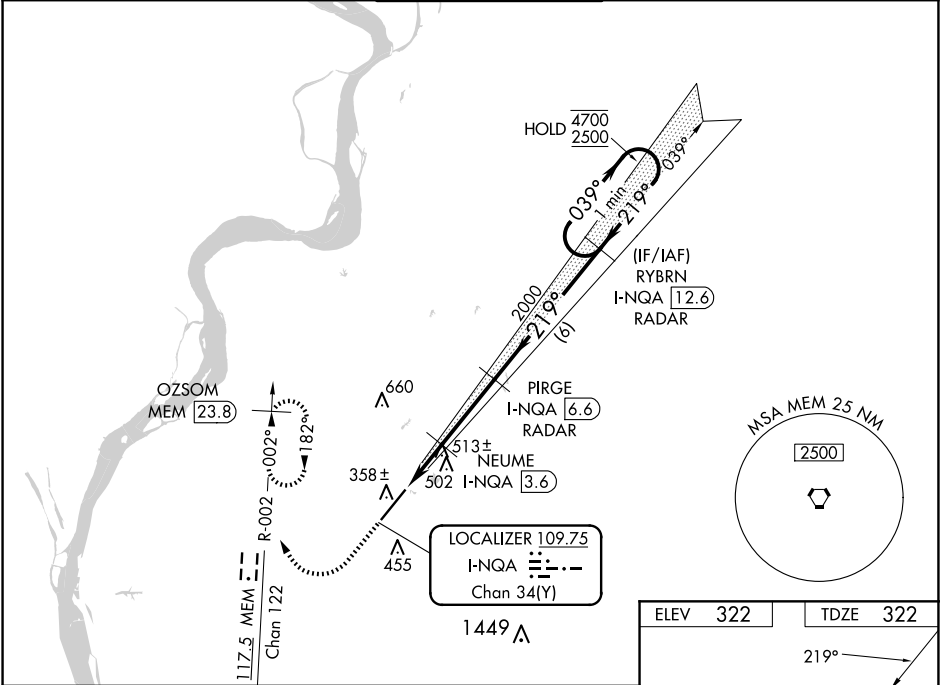
▲

S-ILS 22 procedure NA when control tower closed if ceiling/visibility lower than 800/2. For inop ALS, increase S-ILS 22 Cat E visibility to ¾ SM and S-LOC 22 Cat E visibility to 1 ½ SM.

MALSR

MISSED APPROACH: Climb to 1000 then climbing right turn to 3000 and on MEM VORTAC R-002 to OZSOM/MEM 23.8 DME and hold, continue climb-in-hold to 3000.

AWOS-3 118.925	MEMPHIS APP CON 119.1 291.6 125.8 338.3 (176°-355°) (356°-175°)	MILLINGTON TOWER ★ 120.25 (CTAF) 0 340.2	GND CON 121.375	UNICOM 122.95
--------------------------	-------------------------------------------------------------------------------------------	-----------------------------------------------------------	---------------------------	-------------------------



1000 3000

↑

MEM R-002

OZSOM MEM 23.8

VGSI and ILS glidepath not coincident (VGSI Angle 3.00/TCH 67).

One Minute Holding Pattern

PIRGE I-NQA 6.6

NEUME I-NQA 3.6

I-NQA 2.7

I-NQA 1.5

1040

2000

219°

039°

4700 2500

GS 3.00° TCH 55

CATEGORY	A	B	C	D	E
S-ILS 22	522-½ 200 (200-½)				
S-LOC 22	780-½	458 (500-½)	780-¾	458 (500-¾)	
CIRCLING	800-1 478 (500-1)	820-1 498 (500-1)	920-1½ 598 (600-1½)	960-2 638 (700-2)	960-2¼ 638 (700-2¼)

ELEV 322

TDZE 322

219°

039°

0.5% DOWN

0.5% UP

8001 x 150

TWR

REIL Rwy 22

REIL Rwy 4 0

HIRL Rwy 4-22 0

SE-1, 07 AUG 2025 to 04 SEP 2025

SE-1, 07 AUG 2025 to 04 SEP 2025