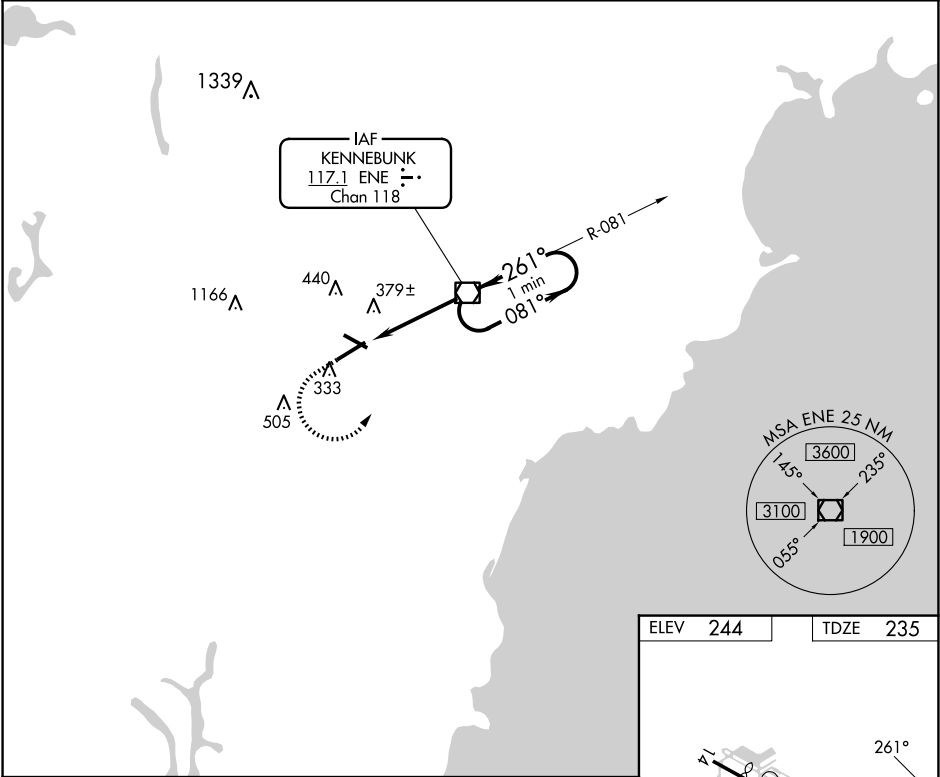


VORTAC ENE	APP CRS	Rwy Idg	6001
117.1	261°	TDZE	235
Chan 118		Apt Elev	244

VOR RWY 25
SANFORD SEACOAST RGNL (SFM)

<p>Inoperative table does not apply to S-25 Cats A/B. For inoperative ODALS, increase S-25 Cats C/D visibility to 1$\frac{1}{8}$. When local altimeter setting not received, use Rochester, NH altimeter setting increase all MDA 40 feet, S-25 Cats C/D visibility $\frac{1}{8}$ SM, and Circling Cat C visibility $\frac{1}{4}$ SM; for inop ODALS, increase S-25 Cats C/D visibility to 1$\frac{1}{8}$. Rwy 25 helicopter visibility reduction below $\frac{3}{4}$ SM NA.</p>			ODALS 	MISSED APPROACH: Climb to 800 then climbing left turn to 2000 direct ENE VOR/DME and hold.
AWOS-3PT 120.025	PORTLAND APP CON ★ 119.75 269.35	CLNC DEL 121.725	UNICOM 123.075 (CTAF)	



		ENE			One Minute Holding Pattern		
		ENE 3.1	ENE VOR/DME		081° → 2000		
		ENE 4.2	261°		← 261°		
		1.1	3.1 NM		1700		
		3.17°		TCH 47			
CATEGORY	A	B	C	D			
S-25	640-1		405 (400-1)				
CIRCLING	760-1 516 (600-1)		1180-2¾ 936 (1000-2¾)		1240-3 996 (1000-3)		

ELEV	244	TDZE	235
REIL Rwy 7			
HIRL Rwy 7-25			
MIRL Rwy 14-32			
FAF to MAP 4.2 NM			
Knots	60	90	120 150 180
Min:Sec	4:12	2:48	2:06 1:41 1:24