

COTULLA, TEXAS

AL-907 (FAA)

24137

WAAS CH 42836 W31A	APP CRS 309°	Rwy Idg 6005 TDZE 464 Apt Elev 474
--	------------------------	---

RNAV (GPS) RWY 31
COTULLA-LA SALLE COUNTY (COT)

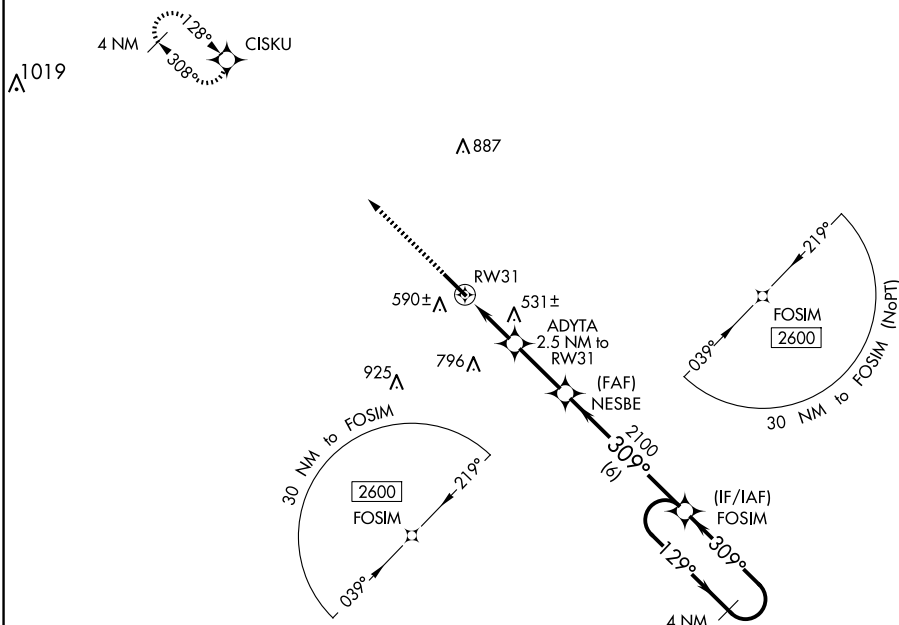
T

For uncompensated Baro-VNAV systems, LNAV/VNAV NA below -5°C (23°F) or above 54°C (130°F). DME/DME RNP-0.3 NA.

MISSED APPROACH: Climb to 2600 direct CISKU and hold.

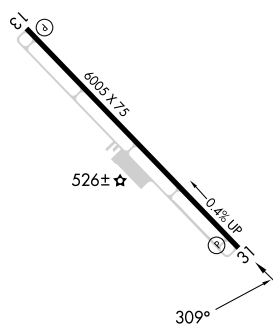
ASOS
118.325

HOUSTON CENTER
134.6 322.5

UNICOM
122.7 (CTAF) **L**

ELEV 474

TDZE 464

MIRL Rwy 13-31 **L**

Amdt 2 18SEP14

28°27'N-99°13'W

COTULLA-LA SALLE COUNTY (COT)
RNAV (GPS) RWY 31

SC-3, 07 AUG 2025 to 04 SEP 2025