

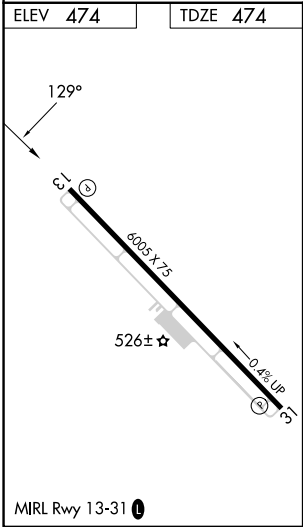
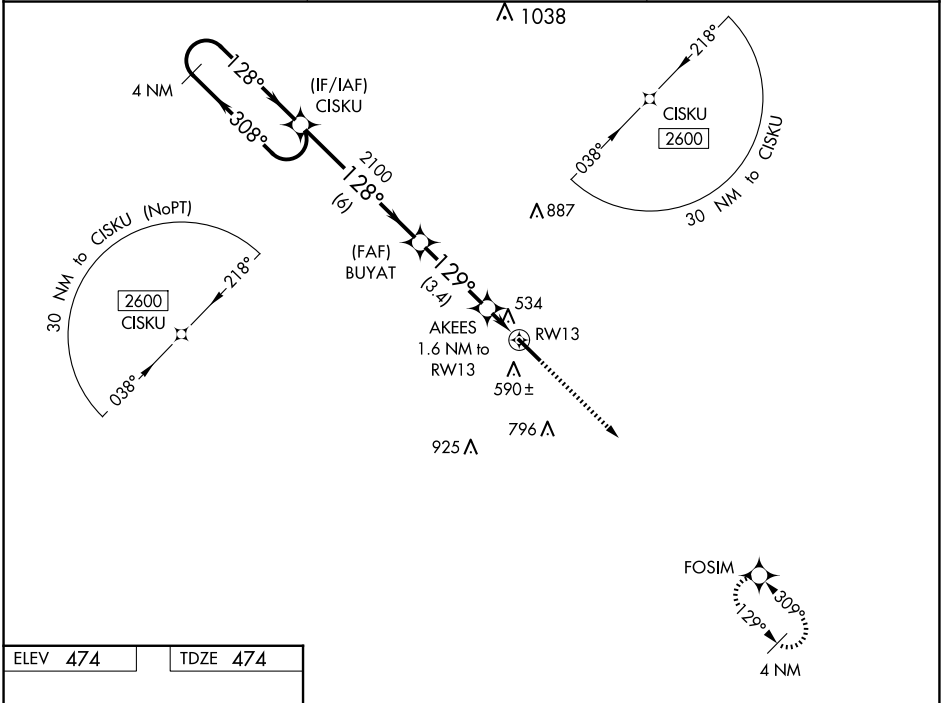
WAAS CH <b>61236</b> <b>W13A</b>	APP CRS <b>129°</b>	Rwy Idg <b>6005</b> TDZE <b>474</b> Apt Elev <b>474</b>
--	------------------------	---

RNAV (GPS) RWY 13

COTULLA-LA SALLE COUNTY (COT)

<div><div>▼</div><div>For uncompensated Baro-VNAV systems, LNAV/VNAV NA below -5°C (23°F) or above 54°C (130°F). DME/DME RNP-0.3 NA.</div></div>	MISSED APPROACH: Climb to 2600 direct FOSIM and hold.
--	---

ASOS <b>118.325</b>	HOUSTON CENTER <b>134.6 322.5</b>	UNICOM <b>122.7 (CTAF) 0</b>
------------------------	--------------------------------------	---------------------------------



4 NM Holding Pattern CISKU		2600	FOSIM	* LNAV only	
2600 ← 308°		128° →	2100	BUYAT	AKEES 1.6 NM to RW13
GP 3.00° TCH 45		2100	2100	129°	* 0.9 NM to RW13
		6 NM	3.4 NM	0.7	0.9
CATEGORY	A	B	C	D	
LPV DA	724-1	250 (300-1)		NA	
LNAV/VNAV DA	724-1	250 (300-1)		NA	
LNAV MDA	800-1	326 (400-1)		NA	
CIRCLING	920-1 446 (500-1)	940-1 466 (500-1)	1120-1¾ 646 (700-1¾)	NA	