

VOR/DME GRK 111.8 Chan 55	APP CRS 152°	Rwy Ldg TDZE Apt Elev	9997 1015 1015
---	------------------------	-----------------------------	---

VOR RWY 15
ROBERT GRAY AAF (GRK)

DME required.

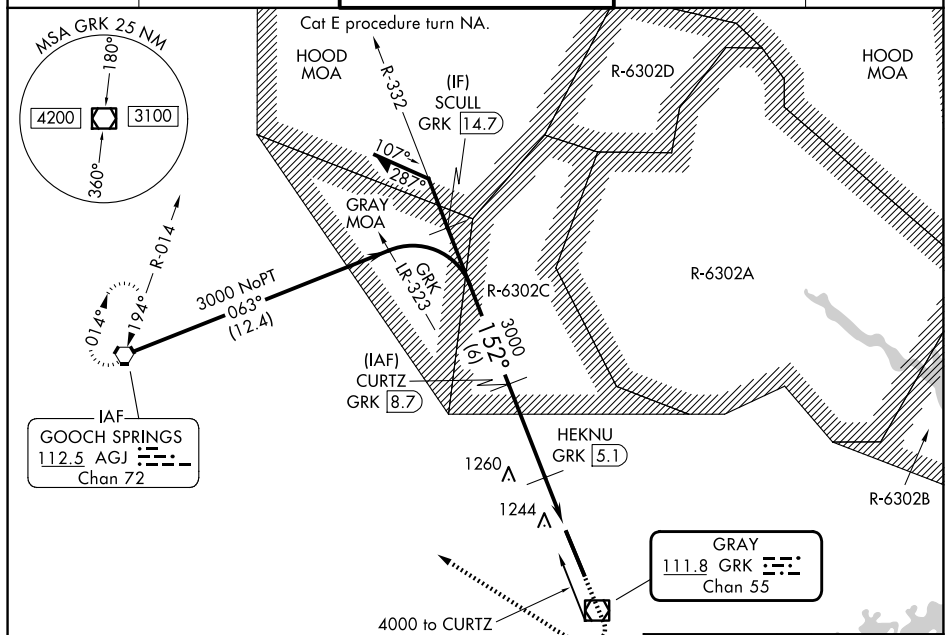
NA Circling NA west of Rwy 15 and 33. For inop ALS, increase S-15 Cat E visibility to 1½ SM.

MALSR

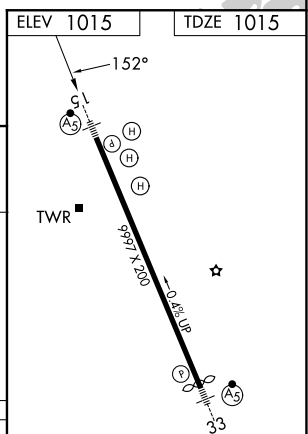
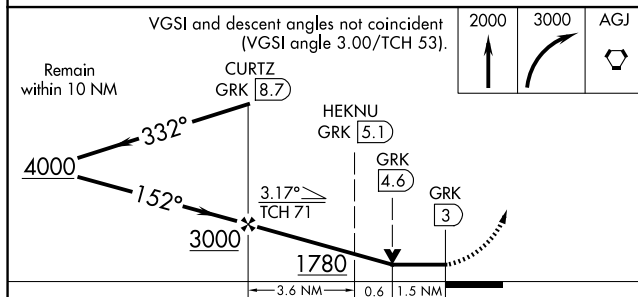


MISSED APPROACH: Climb to 2000 then climbing right turn to 3000 direct AGJ VORTAC and hold.

ATIS 124.9	GRAY APP CON 120.075 323.15	GRAY TOWER 120.75(CTAF) 285.5	GND CON 121.8 279.5	CLNC DEL 126.2 251.1
----------------------	---------------------------------------	---	-------------------------------	--------------------------------



SC-3, 07 AUG 2025 to 04 SEP 2025



CATEGORY	A	B	C	D	E	33					
S-15	1560/24	545 (600-½)	1560/60 545 (600-1¼)			HIRL Rwy 15-33					
						FAF to MAP 5.7 NM					
CIRCLING	1560-1	545 (600-1)	1560-15 545 (600-1½)	1620-2 605 (700-2)	1740-2½ 725 (800-2½)	Knots	60	90	120	150	180
						Min:Sec	5:42	3:48	2:51	2:17	1:54