

LOC I-GRK	APP CRS	Rwy Ldg	9997
111.1	153°	TDZE	1015
		Apt Elev	1015

ILS or LOC RWY 15

ROBERT GRAY AAF (GRK)

⚠

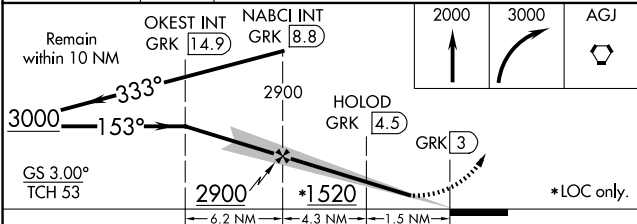
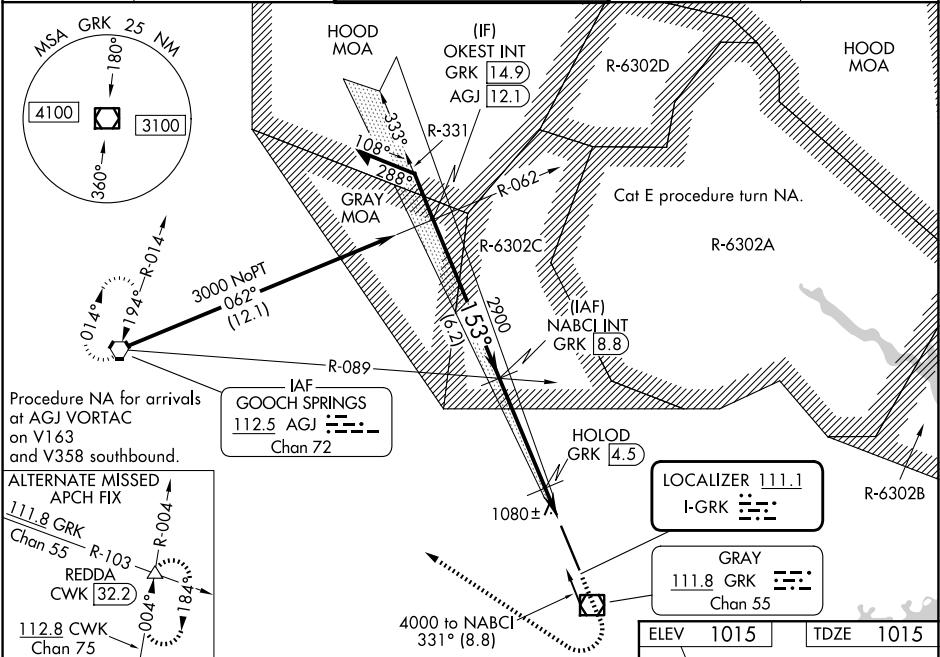
⚠

Circling NA west of Rwy 15-33. For inop ALS, increase S-ILS 15 Cat E visibility to RVR 4000, S-LOC 15 Cats C/D/E visibility to 1 $\frac{1}{2}$ SM, and HOLOD FIX minimums S-LOC 15 Cats C/D/E visibility to RVR 5500. DME from GRK VOR/DME. Simultaneous reception of I-GRK and GRK VOR/DME required.
RVR 1800 authorized with use of FD or AP or HUD to DA.

MALSR

MISSED APPROACH: Climb to 2000 then climbing right turn to 3000 direct AGJ VORTAC and hold.

ATIS	GRAY APP CON	GRAY TOWER	GND CON	CINC DEL
124.9	120.075 323.15	120.75(CTAF) 285.5	121.8 279.5	126.2 251.1



CATEGORY	A	B	C	D	E
S-ILS 15 #		1215/24	200 (200- $\frac{1}{2}$)		
S-LOC 15	1520/24	505 (600- $\frac{1}{2}$)	1520/55	505 (600-1)	
CIRCLING	1540-1	525 (600-1)	1560-1 $\frac{1}{2}$ 545 (600-1 $\frac{1}{2}$)	1620-2 605 (700-2)	1740-2 $\frac{1}{2}$ 725 (800-2 $\frac{1}{2}$)
HOLOD FIX MINIMUMS (DME REQUIRED)					
S-LOC 15	1380/24	365 (400- $\frac{1}{2}$)	1380/35	365 (400- $\frac{5}{8}$)	
CIRCLING	1540-1	525 (600-1)	1560-1 $\frac{1}{2}$ 545 (600-1 $\frac{1}{2}$)	1620-2 605 (700-2)	1740-2 $\frac{1}{2}$ 725 (800-2 $\frac{1}{2}$)

