

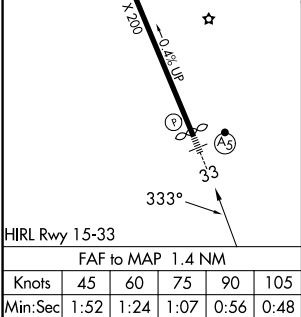
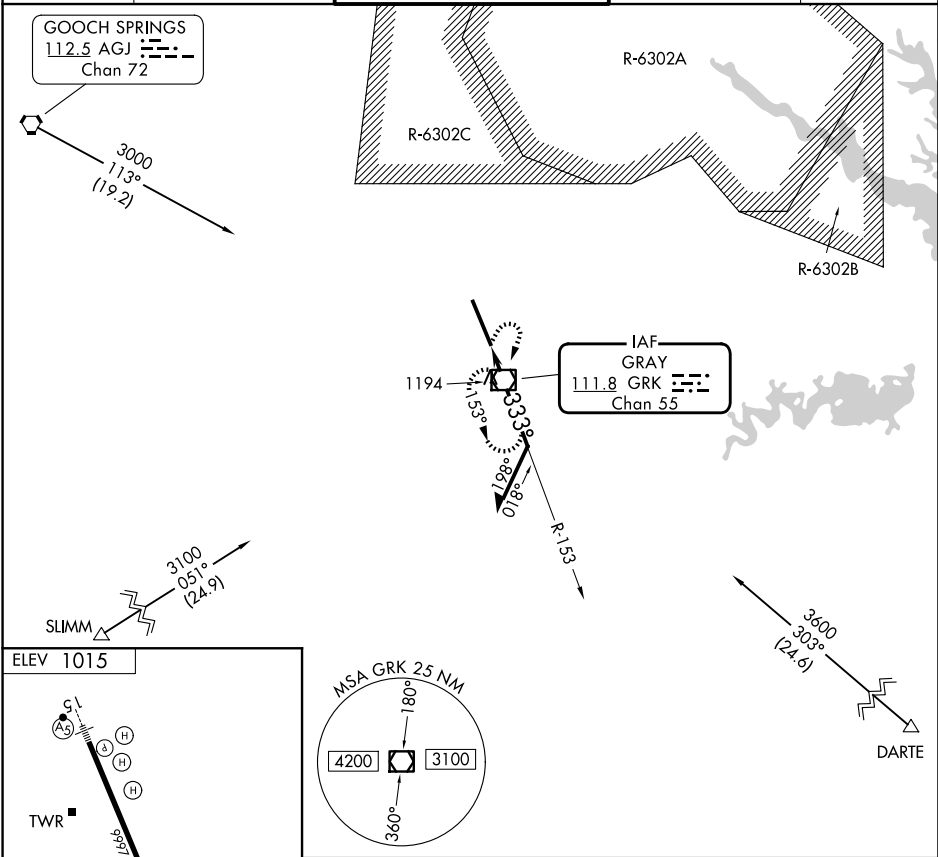
VOR/DME GRK	APP CRS	Rwy Ldg TDZE	9803
111.8	333°	N/A	
Chan 55		Apt Elev	1015

COPTER VOR RWY 33

ROBERT GRAY AAF (GRK)

NA ASR/PAR	MALSR	MISSED APPROACH: Climbing right turn to 3000 direct GRK VOR/DME and hold.
---------------	-------	---

ATIS 124.9	GRAY APP CON 120.075 323.15	GRAY TOWER 120.75 (CTAF) 285.5	GND CON 121.8 279.5	CLNC DEL 126.2 251.1
---------------	--------------------------------	-----------------------------------	------------------------	-------------------------



3000	GRK	GRK VOR/DME	Remain within 5 NM
3000	153°	333°	3000
GRK 1.4	6.49° TCH 52	2000	VGSI and descent angles not coincident (VGSI Angle 3.00/TCH 50).
1.4 NM			
CATEGORY	COPTER		
H-33	1460-¼ 465 (500-¼)		