

WAAS  
CH **70303**  
**W05A**

APP CRS  
**045°**

Rwy Idg **5601**  
TDZE **205**  
Apt Elev **221**

**RNAV (GPS) RWY 5**

MASSENA INTL-RICHARDS FLD (MSS)

RNP APCH- GPS.

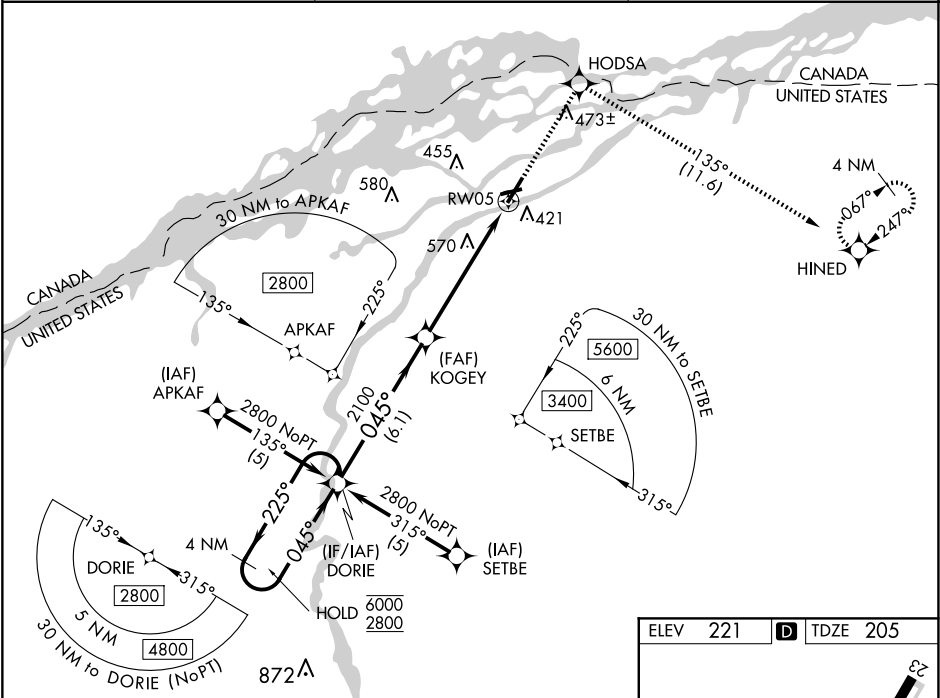
▼

▲

Circling Rwy 9, 23, 27 NA at night.  
For uncompensated Baro-VNAV systems,  
LNAV/VNAV NA below -15°C or above 54°C.

MISSED APPROACH: Climb to 3000 direct  
HODSA and on track 135° to HINED and hold.

ASOS <b>128.075</b>	BOSTON CENTER <b>135.25 377.1</b>	UNICOM <b>123.0 (CTAF) 0</b>
------------------------	--------------------------------------	---------------------------------



VGSI and RNAV glidepath not coincident  
(VGSI Angle 3.00/TCH 55).

4 NM Holding Pattern

DORIE

GP 3.00°  
TCH 54

3000

HODSA

tr 135°

HINED

\*LNAV only

\*1.9 NM to RWY 05

RWY 05

6.1 NM

3.8 NM

1.9 NM

CATEGORY	A	B	C	D
LPV DA		455-3 <sup>3</sup> / <sub>4</sub>	250 (300-3 <sup>3</sup> / <sub>4</sub> )	
LNAV/VNAV DA		968-2 <sup>1</sup> / <sub>2</sub>	763 (800-2 <sup>1</sup> / <sub>2</sub> )	
LNAV MDA	860-1	655 (700-1)	860-1 <sup>7</sup> / <sub>8</sub>	655 (700-1 <sup>7</sup> / <sub>8</sub> )
CIRCLING	860-1	639 (700-1)	880-1 <sup>7</sup> / <sub>8</sub>	900-2 <sup>1</sup> / <sub>4</sub>
			659 (700-1 <sup>7</sup> / <sub>8</sub> )	679 (700-2 <sup>1</sup> / <sub>4</sub> )

REIL Rwy 5, 9 and 27

HIRL Rwy 5-23

MIRL Rwy 9-27