

TACAN NKX	APCH CRS	Rwy Idg	24R	12,000	24L	8001
Chan 33	247°	TDZE	24R	475	24L	477
		Arpt Elev		477		

[USN]

TACAN Y RWY 24R

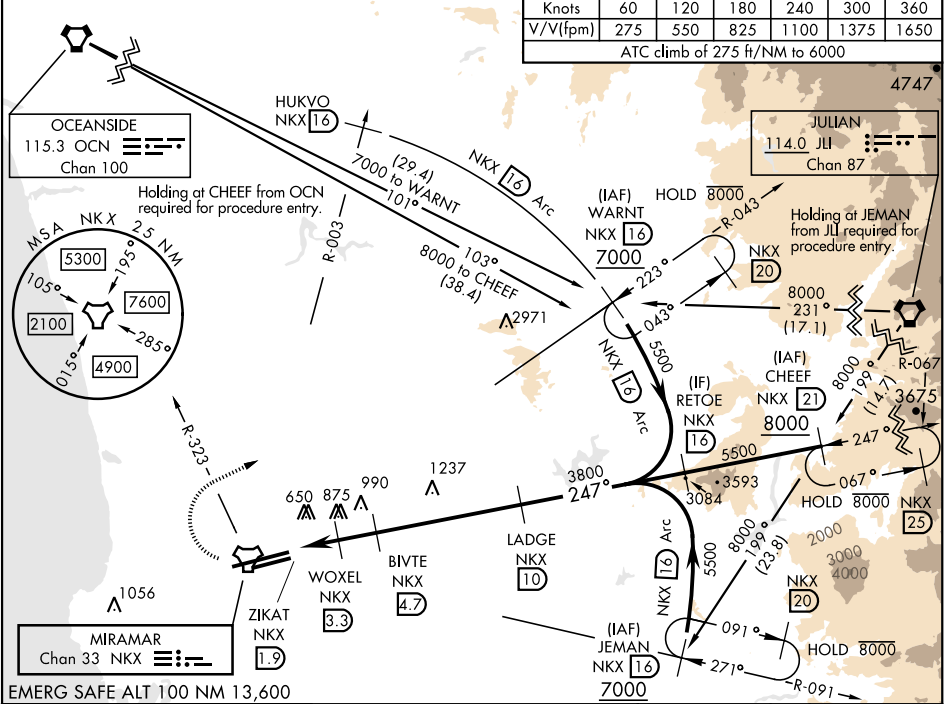
MIRAMAR MCAS (JOE FOSS FLD) (KNKX)

★ When ALS inop, increase CAT AB vis to 1 mile, CAT CD to 1½ miles.



MISSED APPROACH: Climb to 1500, then climbing right turn to 7000 via NKX TACAN R-003 to HUKVO. Arc NE of NKX via the 16 mile arc to WARNT and hold. Cross NKX R-323 at 3000 mandatory, cross HUKVO at 6000 mandatory.

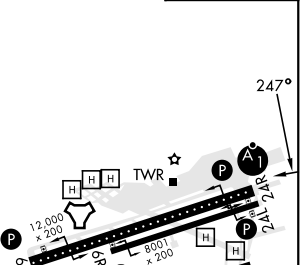
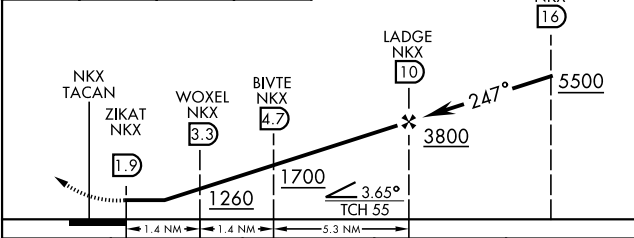
ATIS ★	SOCAL APP CON	FOSS TOWER ★	GND CON	CLNC DEL	LA CENTER	ASR/ PAR
133.475 352.0	132.2 269.1	135.2 298.925	128.625 307.325	125.975 254.325	291.7	



1500	7000	HUKVO NKX 16	Arc NE 16
↑	NKX R-003		

VGSI and descent angles not coincident.

ELEV 477	TDZE 24R 475
	TDZE 24L 477



CATEGORY	A	B	C	D
S-24R ★	1140-½ 665 (700-½)		1140-1½ 665 (700-1½)	
SIDE-STEP 24L	1140-1 663 (700-1)		1140-1¾ 663 (700-1¾)	1140-2 663 (700-2)
CIRCLING	1140-1 663 (700-1)		1140-1¾ 663 (700-1¾)	703 (800-2¼)

HIRL Rwy 6L-24R
HIRL Rwy 6R-24L

TACAN Y RWY 24R

SW-3, 07 AUG 2025 to 04 SEP 2025

SW-3, 07 AUG 2025 to 04 SEP 2025