

SAN DIEGO, CALIFORNIA

RNAV (GPS) RWY 24R

MIRAMAR MCAS (JOE FOSS FLD) (KNKX)

WAAS CH 61450 W24B	APCH CRS 243°	Rwy Idg 12,000 TDZE 475 Arpt Elev 477
--------------------------	------------------	--

[USN]

RNP APCH

T * When ALS inop, increase vis to $\frac{3}{4}$ mile.
 ** When ALS inop, increase vis to $\frac{3}{4}$ mile.
 *** When ALS inop, increase CAT AB vis to 1 mile,
 CAT CD vis to $1\frac{3}{4}$ miles.

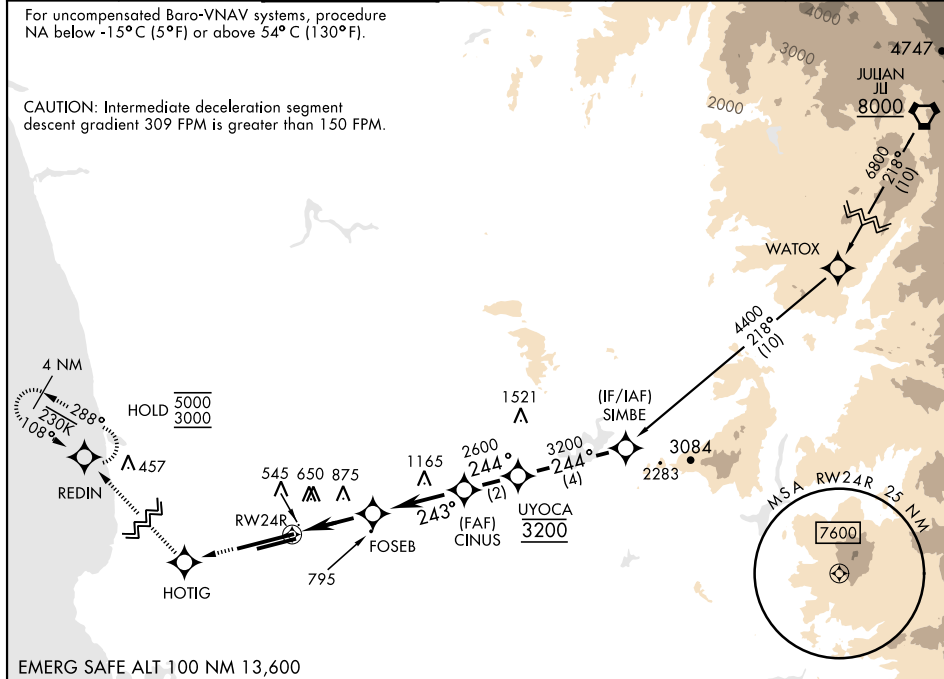


MISSED APPROACH: Climb to 3000 direct HOTIG, 288° track to REDIN and hold.

ATIS ★	SOCAL APP CON	FOSS TOWER ★	GND CON	CLNC DEL	LA CENTER	ASR/ PAR
352.0	132.2	135.2	128.625	125.975		
133.475	269.1	298.925	307.325	254.325	291.7	

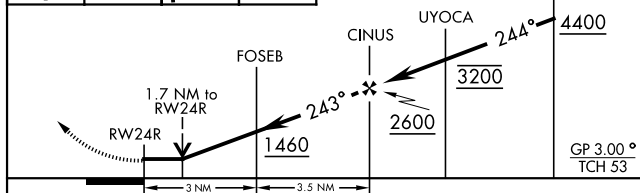
For uncompensated Baro-VNAV systems, procedure NA below -15°C (5°F) or above 54°C (130°F).

CAUTION: Intermediate deceleration segment descent gradient 309 FPM is greater than 150 FPM.

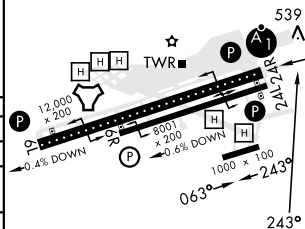


EMERG SAFE ALT 100 NM 13,600

3000 ↑	HOTIG ✦	tr 288° ↻	REDIN ✦	VGSI and RNAV glidepath not coincident (VGSI Angle 3.00/TCH 57). SIMBE	ELEV 477	TDZE 475
-----------	------------	-----------------	------------	--	----------	----------



CATEGORY	A	B	C	D
LPV DA *	675-½	200	(200-½)	
LNAV/VNAV DA **	725- ½	250	(300-½)	
LNAB MDA ***	1060-½	585 (600-½)	1060-1¼	585 (600-1¼)
CIRCLING	1060-1	583 (600-1)	1060-1¾ 583 (600-1¾)	1180-2¼ 703 (800-2¼)



SAN DIEGO, CALIFORNIA

32°52'N-117°09'W

MIRAMAR MCAS (JOE FOSS FLD) (KNKX)

Amdt 4 27JAN22

RNAV (GPS) RWY 24R