


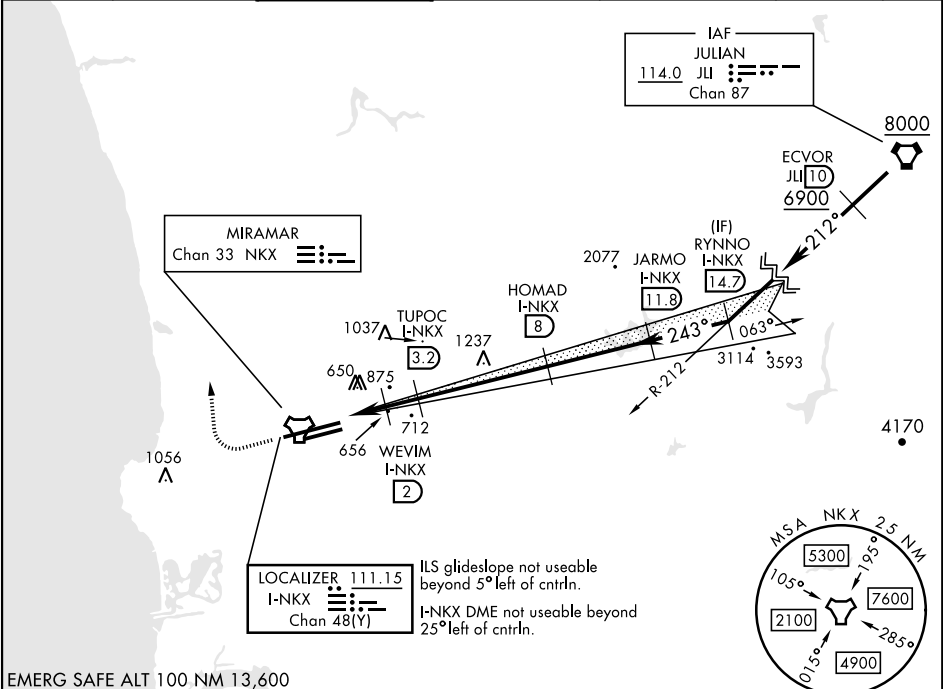
SAN DIEGO, CALIFORNIA

LOC/DME I-NKX 111.15 Chan 48(Y)	APCH CRS 243°	Rwy Idg 8001	24L 12,000	24R 475
		TDZE 477		
		Arpt Elev 477		

ILS Z or LOC/DME Z RWY 24R

[USN] MIRAMAR MCAS (JOE FOSS FLD) (KNKX)

DME and RADAR required			ALSF-1 	MISSED APPROACH: Climb to 1500, then climbing right turn to 3000 via heading 340°. Expect radar vectors.		
▼ ** When ALS inop, increase vis to ¾ mile. ** When ALS inop, increase CAT AB vis to 1 mile, CAT CDE vis to 1 ½ miles. *** CAT E circling not authorized S of Rwy 6R-24L.						
ATIS ★ 133.475 352.0	SOCAL APP CON 132.2 269.1	FOSS TOWER ★ 135.2 298.925 0	GND CON 128.625 307.325	CLNC DEL 125.975 254.325	LA CENTER 291.7	ASR/ PAR



EMERG SAFE ALT 100 NM 13,600

1500 3000 ↑ hdg 340°		VCSI and descent angles not coincident.		ELEV 477		TDZE 24L 477 TDZE 24R 475	