

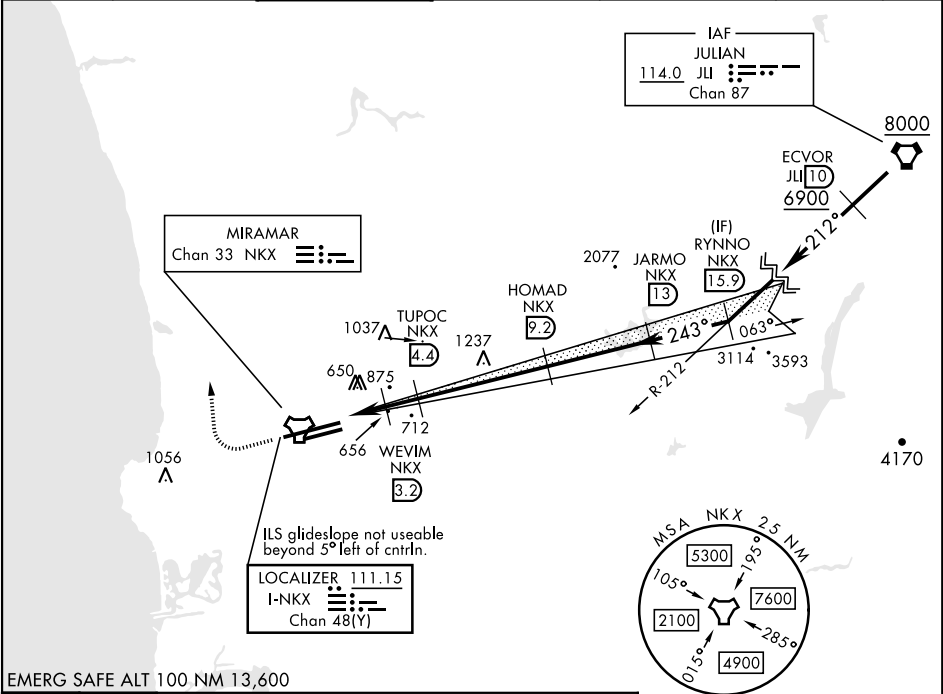
LOC/DME I-NKX <b>111.15</b> Chan <b>48 (Y)</b>	APCH CRS <b>243°</b>	Rwy Idg <b>8001</b> TDZE <b>477</b> Arpt Elev <b>477</b>	24L <b>12,000</b> <b>475</b> <b>477</b>	24R
--	-------------------------	--	---	-----

ILS Y or LOC/DME Y RWY 24R

[USN]

MIRAMAR MCAS (JOE FOSS FLD) (KNKX)

TACAN or RADAR required		ALSIF-1		MISSED APPROACH: Climb to 1500, then climbing right turn to 3000 via heading 340°. Expect radar vectors.	
* When ALS inop, increase vis to ¾ mile. ** When ALS inop, increase CAT AB vis to 1 mile, CAT CDE vis to 1 ½ miles. *** CAT E circling not authorized S of Rwy 6R-24L.					
ATIS ★ <b>133.475</b> <b>352.0</b>	SOCAL APP CON <b>132.2</b> <b>269.1</b>	FOSS TOWER ★ <b>135.2</b> <b>298.925</b>	GND CON <b>128.625</b> <b>307.325</b>	CLNC DEL <b>125.975</b> <b>254.325</b>	LA CENTER <b>291.7</b> ASR/ PAR



EMERG SAFE ALT 100 NM 13,600		ELEV 477		TDZE 24L 477 TDZE 24R 475	
1500 3000 ↑ hdg 340°		VCST and descent angles not coincident.			
		HOMAD JARMO RYNNO NKX NKX NKX 9.2 13 15.9			
		TUPOC WEVIM NKX NKX 4.4 3.2			
		ZENPA NKX 1.8			
		1200 1600 3000 4700			
		GS 3.00° TCH 53			
		0.4 1.4 NM 1.2 NM 4.8 NM			
CATEGORY	A	B	C	D	E
S-ILS 24R*	675 - ½		200	(200- ½)	
S-LOC/DME 24R**	920- ½	445 (500- ½)	920- ¾	445 (500- ¾)	
SIDESTEP 24L	920-1	443 (500-1)	920-1 ½ 443 (500-1 ½)	920-2 443 (500-2)	
CIRCLING***	940-1 463 (500-1)	960-1 483 (500-1)	960-1 ½ 483 (500-1 ½)	1180-2 ¼ 703 (800-2 ¼)	1360-3 883 (900-3)

ILS Y or LOC/DME Y RWY 24R