

## HI-TACAN Z RWY 24R

TACAN NKX Chan 33	APCH CRS 247°	Rwy Idg 24R	12,000	24L	8001
		TDZE 24R	475	24L	477
		Arpt Elev	477		

[USN]

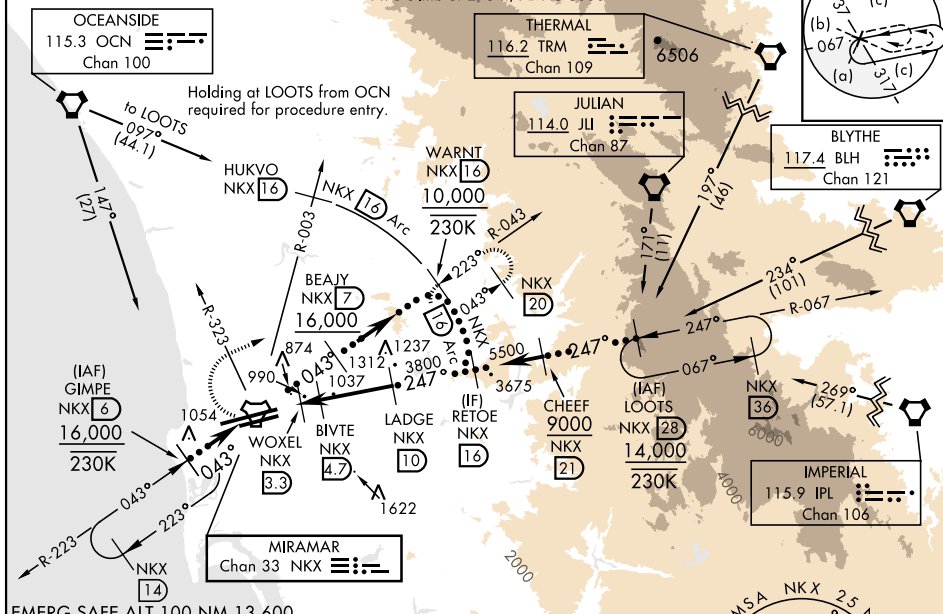
MIRAMAR MCAS (JOE FOSS FLD) (KNKX)

<p>*When ALS inop, increase CAT CDE vis to 1½ miles.</p> <p>** CAT E circling not authorized S of Rwy 6R-24L.</p>	<p>ALSF-1</p>	<p>MISSED APPROACH: Climb to 1500, then climbing right turn to 7000 via NKX TACAN R-003 to HUKVO. Arc NE of NKX via 16 mile arc to WARNT and hold. Cross R-323 at 3000 mandatory, cross HUKVO at 6000 mandatory.</p>
---	---------------	--

ATIS ★ 133.475 352.0	SOCAL APP CON 132.2 269.1	FOSS TOWER ★ 135.2 298.925 0	GND CON 128.625 307.325	CLNC DEL 125.975 254.325	ASR/ PAR	LA CENTER 291.7
-------------------------	------------------------------	---------------------------------	----------------------------	-----------------------------	-------------	--------------------

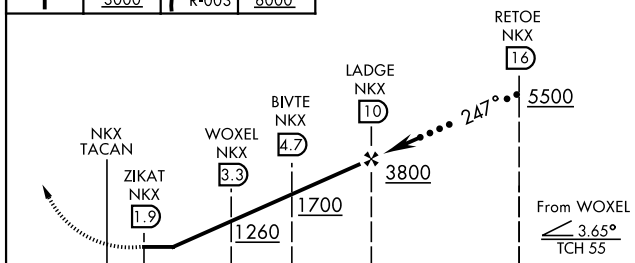
Knots	60	120	180	240	300	360
V/V(fpm)	275	550	825	1100	1375	1650

ATC climb of 275 ft/NM to 6000

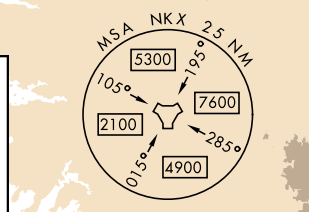


1500	cross NKX R-323 3000	7000	cross NKX R-003	cross HUKVO NKX 16 6000
------	-------------------------	------	-----------------	----------------------------

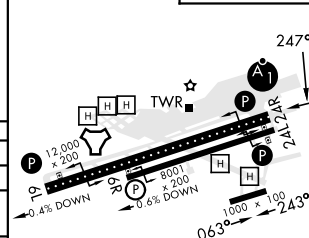
VGSI and descent angles not coincident.



CATEGORY	C	D	E
S-24R*	1140-1½	665 (700-1½)	
SIDESTEP 24L	1140-1⅞ 663 (700-1⅞)	1140-2 663 (700-2)	1140-2¼ 663 (700-2¼)
CIRCLING**	1140-1⅞ 663 (700-1⅞)	1180-2¼ 703 (800-2¼)	1360-3 883 (900-3)



ELEV 477	TDZE 24R 475
	TDZE 24L 477



HIRL Rwy 6L-24R ①

HIRL Rwy 6R-24L ①

## HI-TACAN Z RWY 24R