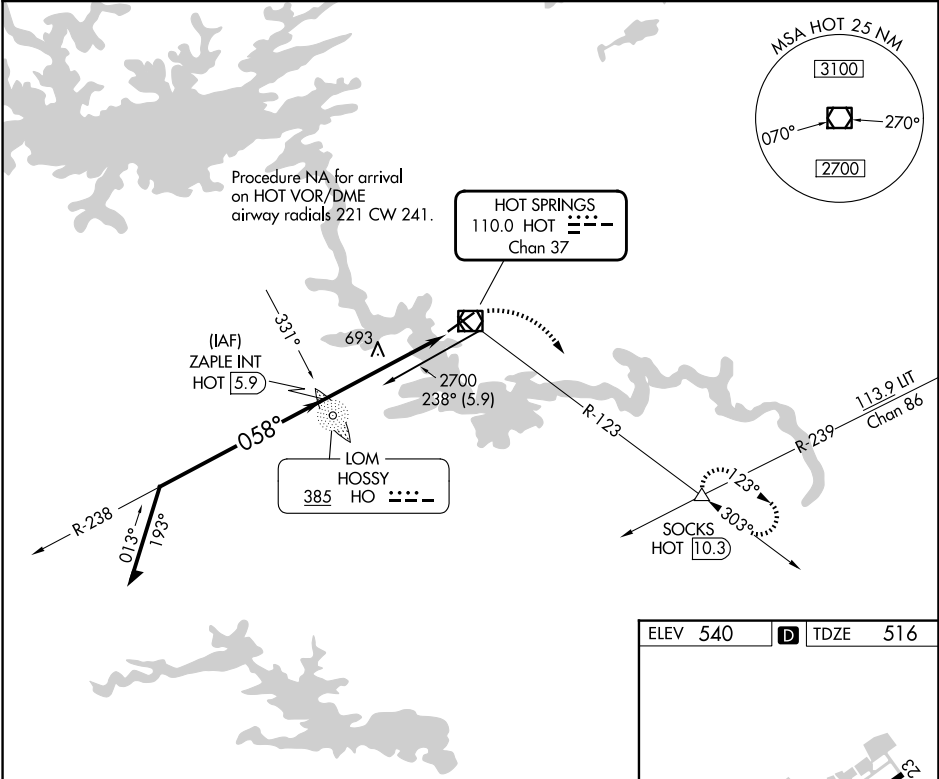


VOR/DME HOT	APP CRS	Rwy Ldg
110.0	058°	6595
Chan 37		TDZE 516
		Apt Elev 540

VOR RWY 5
MEML FLD (HOT)

ADF or DME required for procedure entry. ADF or DME required.	MALSR	MISSED APPROACH: Climbing right turn to 3000 on HOT R-123 to SOCKS INT/HOT 10.3 DME and hold.
<div>⚠</div> <div>⚠</div> <div>Circling NA northwest of Rwys 5 and 23. Circling Rwy 31 NA at night.</div>	<div>⚠</div>	

ASOS 119.925	MEMPHIS CENTER 128.475 377.15	UNICOM 123.0 (CTAF) 0
-----------------	----------------------------------	--------------------------



ELEV 540		TDZE 516	
ZAPLE INT HOT 5.9		SOCKS	
Remain within 10 NM		HOT R-123	
2700		HOT 2.1	
2700		HOT VOR/DME	
2200		HOT VOR/DME	
3.07°		TCH 45	
238°		HOT R-123	
058°		HOT VOR/DME	
3.8 NM		1.3	
0.8		HOT VOR/DME	
CATEGORY	A	B	C
S-5	960-1/2	444 (500-1/2)	960-7/8 444 (500-7/8)
CIRCLING	1080-1	540 (600-1)	1380-2 1/2 840 (900-2 1/2)
			1620-3 1080 (1100-3)