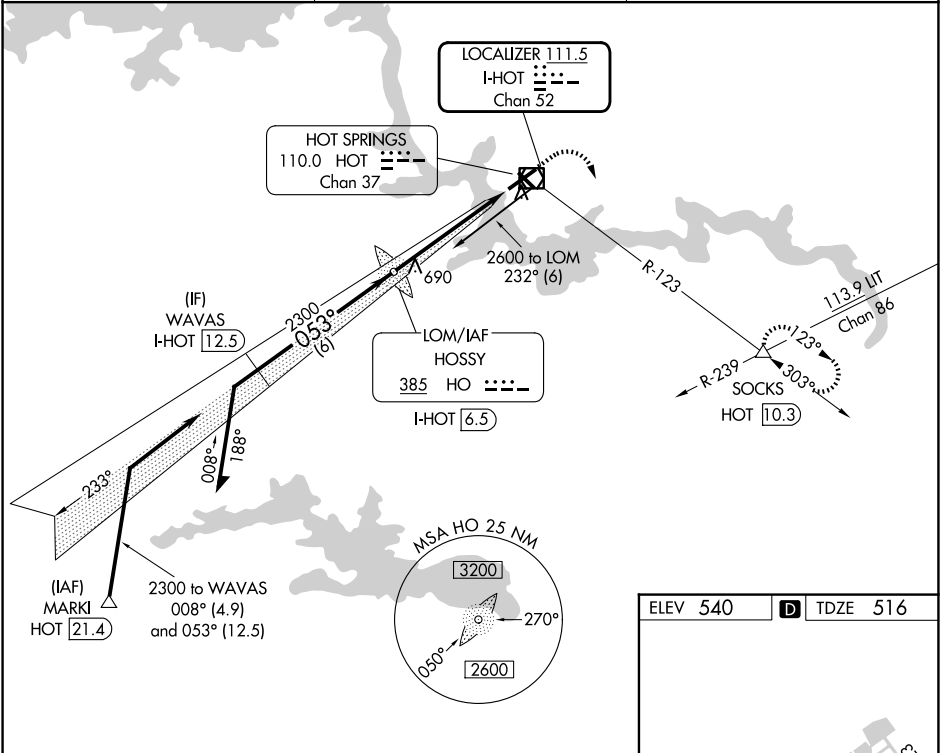


LOC/DME I-HOT	APP CRS	Rwy Ldg	6595
111.5	053°	TDZE	516
Chan 52		Apt Elev	540

ILS or LOC RWY 5
MEML FLD (HOT)

ADF or DME required.	MALSR	MISSED APPROACH: Climb to 1000 then climbing right turn to 3000 on HOT VOR/DME R-123 to SOCKS INT/HOT 10.3 DME and hold.
NA Circling NA northwest of Rwy 5-23. Use I-HOT DME when on localizer course.	AS	

ASOS 119.925	MEMPHIS CENTER 128.475 377.15	UNICOM 123.0 (CTAF)
-----------------	----------------------------------	------------------------



	Remain within 10 NM	HOSSY LOM I-HOT 6.5	2600	1000	3000	SOCKS
					HOT R-123	
					*LOC only.	
	2500	233°	2300			
		053°				
	GS 3.00°					
	TCH 57					
			4 NM	1.1		
CATEGORY	A	B	C	D		
S-ILS 5		732-1/2	216 (200-1/2)			
S-LOC 5	940-1/2	424 (400-1/2)	940-3/4	424 (400-3/4)		
CIRCLING	1080-1	540 (600-1)	1380-2 1/2	1620-3		
			840 (900-2 1/2)	1080 (1100-3)		

