

LOC I-PBF <b><u>111.7</u></b>	APP CRS <b>178°</b>	Rwy Idg <b>5998</b> TDZE <b>206</b> Apt Elev <b>206</b>
----------------------------------	------------------------	---

ILS or LOC RWY 18  
PINEBLUFF RGNL/GRIDER FLD (PBF)

DME required.

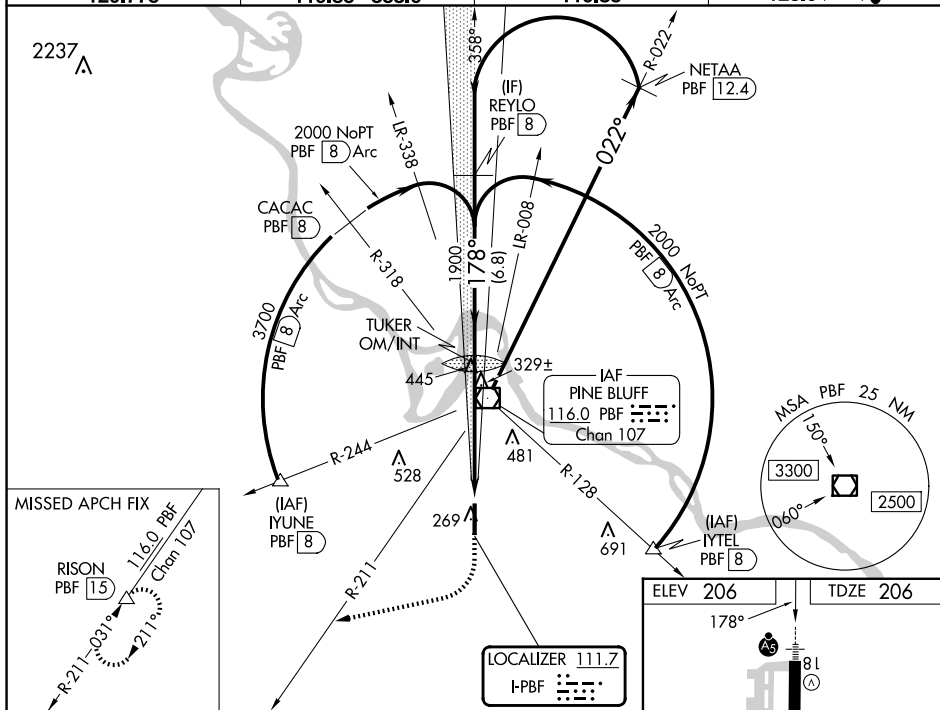
**NA** Rwy 18 helicopter visibility reduction below  $\frac{3}{4}$  SM NA. Inop table does not apply to S-LS 18. For inop ALS, increase S-LOC 18 all Cats visibility to 1 SM. For inop ALS when using Stuttgart altimeter setting, increase S-LOC 18 Cat A/B visibility to 1 SM. DME from PBF VOR/DME. DME requires simultaneous reception of I-PBF and PBF DME. When local altimeter setting not received, use Stuttgart altimeter setting; increase DA to 541 feet and all MDA 80 feet; increase S-LOC 18 Cat C/D visibility  $\frac{1}{2}$  SM and Circling Cats C/D visibility  $\frac{1}{4}$  SM. Autopilot-coupled approach NA below 900.

MALSR



**MISSED APPROACH:**  
Climb to 1000 then  
climbing right turn to  
2000 on PBF VOR/DME  
R-211 to RISON/  
PBF 15 DME and hold.

ASOS	LITTLE ROCK APP CON	CLNC DEL	UNICOM
120.775	119.85 353.6	119.85	123.0 (CTAF) L



CATEGORY	A	B	C	D
S-ILS 18		466- <sup>3</sup> / <sub>4</sub>	260 (300- <sup>3</sup> / <sub>4</sub> )	
S-LOC 18		580- <sup>3</sup> / <sub>4</sub>	374 (400- <sup>3</sup> / <sub>4</sub> )	
<b>C</b> CIRCLING	660-1 454 (500-1)	680-1 474 (500-1)	840-1 <sup>3</sup> / <sub>4</sub> 634 (700-1 <sup>3</sup> / <sub>4</sub> )	880-2 <sup>1</sup> / <sub>4</sub> 674 (700-2 <sup>1</sup> / <sub>4</sub> )

ELEV 206 TDZE 206

178°

81

5998 X 150

36

MIRL Rwy 18-36

FAF to MAP 5.1 NM

Knots	60	90	120	150	180
Min:Sec	5:06	3:24	2:33	2:02	1:42