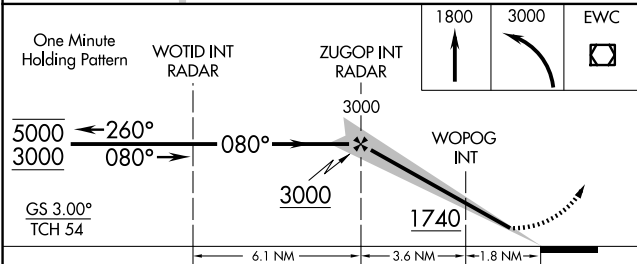
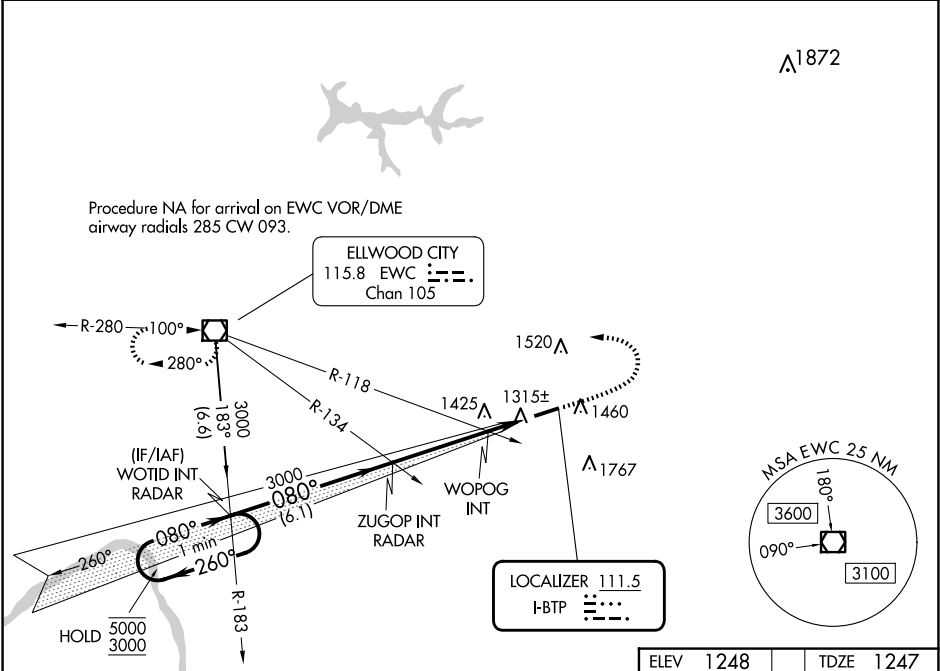


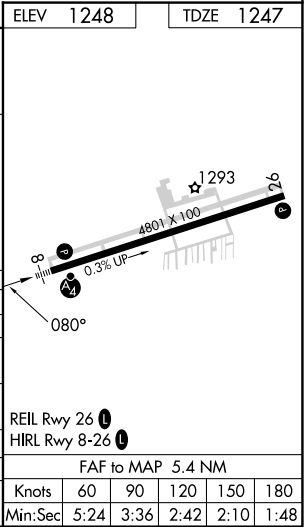
LOC I-BTP <b>111.5</b>	APP CRS <b>080°</b>	Rwy Ldg TDZE Apt Elev <b>4801</b> <b>1247</b> <b>1248</b>
---------------------------	------------------------	--

ILS or LOC RWY 8  
PITTSBURGH/BUTLER RGNL (BTP)

<div><div><div>▼</div><div>▲</div></div><div>Rwy 8 helicopter visibility reduction below ¾ SM NA. Inop table does not apply to S-ILS 8 all Cats.</div></div>		<div>MALSF</div> <div><div><div>24</div><div>+</div></div></div>	MISSED APPROACH: Climb to 1800 then climbing left turn to 3000 direct EWC VOR/DME and hold.
AWOS-3PT 121.45	PITTSBURGH APP CON 124.75 338.2	CLNC DEL 119.4	UNICOM 123.05 (CTAF) 0



CATEGORY	A	B	C	D
S-ILS 8		1497-¾	250 (300-¾)	
S-LOC 8	1740-¾	493 (500-¾)	1740-1½	493 (500-1½)
CIRCLING	1820-1	572 (600-1)	2080-2½ 832 (900-2½)	2080-2¾ 832 (900-2¾)
WOPOG FIX MINIMUMS (DUAL VOR RECEIVERS REQUIRED)				
S-LOC 8		1600-¾	353 (400-¾)	
CIRCLING	1820-1	572 (600-1)	2080-2½ 832 (900-2½)	2080-2¾ 832 (900-2¾)



NE-4, 07 AUG 2025 to 04 SEP 2025

NE-4, 07 AUG 2025 to 04 SEP 2025