

VOR/DME JST

113.0

Chan 77

APP CRS

230°

Rwy Idg TDZE

4387 2284

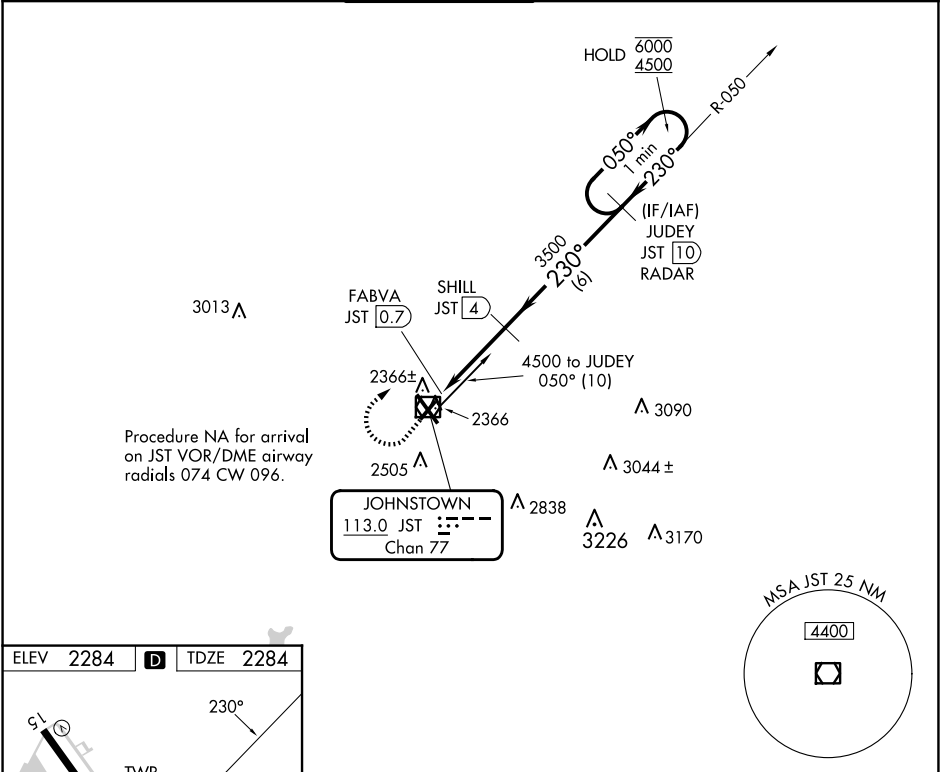
Apt Elev

2284

VOR Z RWY 23

JOHN MURTHA JOHNSTOWN/CAMBRIA COUNTY (JST')

DME required.		MISSED APPROACH: Climb to 3000 then climbing right turn to 4500 on heading 075° and JST VOR/DME R-050 to JUDEY/JST 10 DME/RADAR and hold.		
▼ ▲ Rwy 23 helicopter visibility reduction below ¾ SM NA.				
ATIS	JOHNSTOWN APP CON ★	JOHNSTOWN TOWER ★	GND CON	CLNC DEL
118.325	121.2 299.2	125.75 (CTAF) 0	121.6	126.85 235.775
				UNICOM
				122.95



ELEV 2284

D

TDZE 2284

3000

4500

JST R-050

JUDEY JST 10 RADAR

One Minute Holding Pattern

CATEGORY	A	B	C	D
S-23	2620-1 336 (400-1)			
CIRCLING	2700-1 416 (500-1)	2880-1 596 (600-1)	2880-1½ 596 (600-1½)	3000-2¼ 716 (800-2¼)

NE-4, 07 AUG 2025 to 04 SEP 2025

NE-4, 07 AUG 2025 to 04 SEP 2025