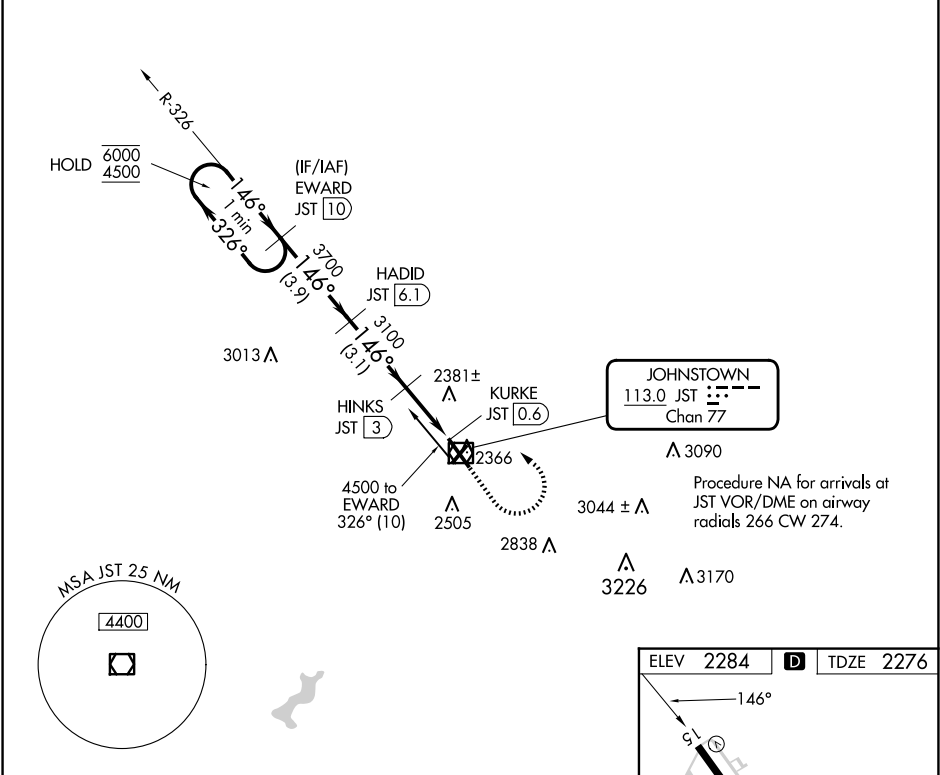


VOR/DME JST	APP CRS	Rwy ldg	6698
113.0	146°	TDZE	2276
Chan 77		Apt Elev	2284

VOR Z RWY 15

JOHN MURTHA JOHNSTOWN/CAMBRIA COUNTY (JST)

DME required.		MISSED APPROACH: Climb to 3000 then climbing left turn to 4500 on heading 300° and JST VOR/DME R-326 to EWARD /10 DME and hold.			
ATIS	JOHNSTOWN APP CON	JOHNSTOWN TOWER	GND CON	CLNC DEL	UNICOM
118.325	121.2 299.2	125.75 (CTAF) 0	121.6	126.85 235.775	122.95



One Minute Holding Pattern				
3.9 NM 3.1 NM 1.4 NM 1.1 NM				
CATEGORY	A	B	C	D
S-15	2660-1	384 (400-1)	2660-1 1/8	384 (400-1 1/8)
CIRCLING	2700-1 416 (500-1)	2880-1 596 (600-1)	2880-1 1/2 596 (600-1 1/2)	3000-2 1/4 716 (800-2 1/4)

