

VOR/DME JST  
**113.0**  
Chan **77**

APP CRS  
**230°**

Rwy Idg  
TDZE  
Apt Elev  
**4387**  
**2284**  
**2284**

VOR Y RWY 23

JOHN MURTHA JOHNSTOWN/CAMBRIA COUNTY (JST')

V

A

Rwy 23 helicopter visibility reduction below ¾ SM NA.

MISSED APPROACH: Climb to 4200 then left turn direct JST VOR/DME and hold.

ATIS  
**118.325**

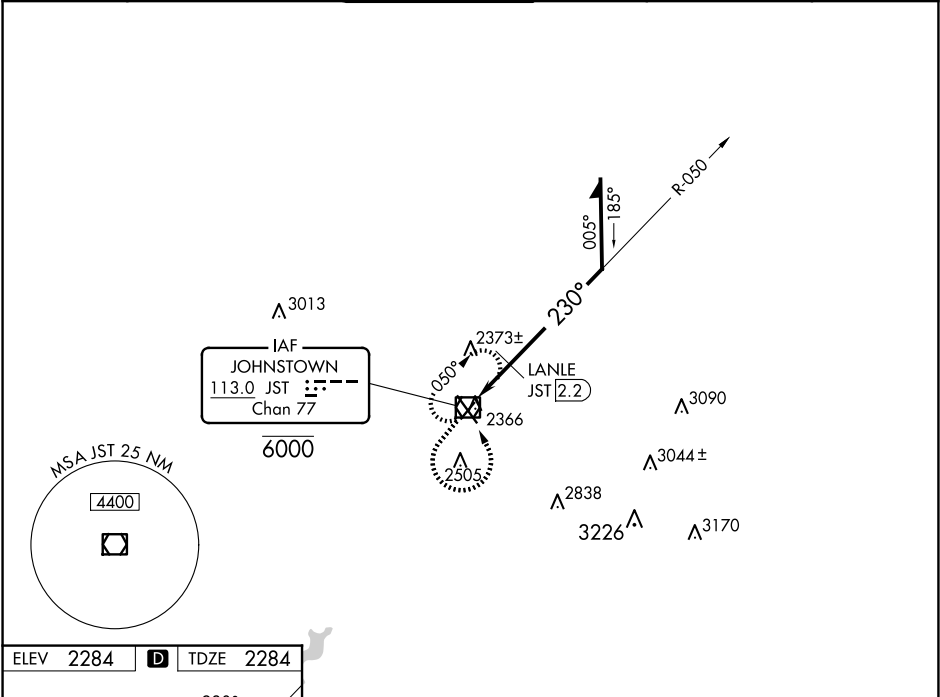
JOHNSTOWN APP CON ★  
**121.2 299.2**

JOHNSTOWN TOWER ★  
**125.75 (CTAF) 0**

GND CON  
**121.6**

CLNC DEL  
**126.85 235.775**

UNICOM  
**122.95**



ELEV **2284** **D** TDZE **2284**

4200

JST

JST VOR/DME  
6000

050°

Remain within 10 NM

3800

2920

2.98°

TCH 45

1.1

0.8 NM

CATEGORY	A	B	C	D
S-23	2920-1	636 (700-1)	2920-1¾ 636 (700-1¾)	2920-2 636 (700-2)
CIRCLING	2920-1	636 (700-1)	2920-1¾ 636 (700-1¾)	3000-2¼ 716 (800-2¼)
LANLE FIX MINIMUMS				
S-23	2660-1 376 (400-1)			2660-1¼ 376 (400-1¼)
CIRCLING	2700-1 416 (500-1)	2880-1 596 (600-1)	2880-1½ 596 (600-1½)	3000-2¼ 716 (800-2¼)