

WAAS CH <b>61029</b> <b>W05A</b>	APP CRS <b>049°</b>	Rwy Idg TDZE Apt Elev <b>4387</b> <b>2283</b> <b>2284</b>
--	------------------------	--

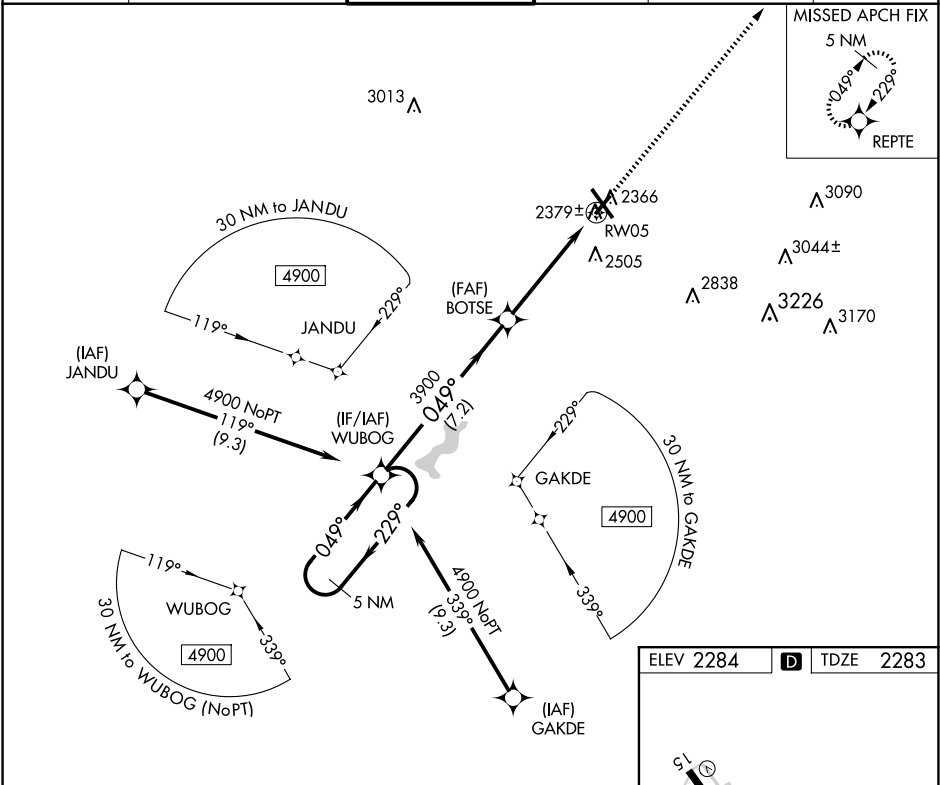
RNAV (GPS) RWY 5

JOHN MURTHA JOHNSTOWN/CAMBRIA COUNTY (JST)

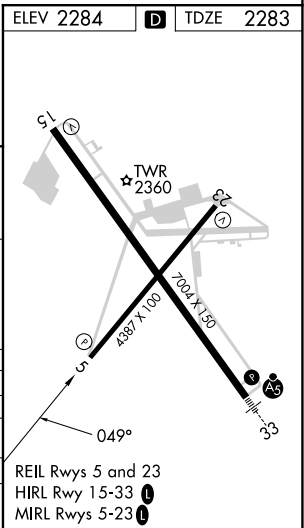
When local altimeter setting not received, procedure NA. For uncompensated Baro-VNAV systems, LNAV/VNAV NA below -19°C (-2°F) or above 29°C (84°F). DME/DME RNP-0.3 NA. Rwy 5 helicopter visibility reduction below ¾ SM NA.

MISSED APPROACH: Climb to 4900 direct REPT and hold.

ATIS <b>118.325</b>	JOHNSTOWN APP CON ★ <b>121.2 299.2</b>	JOHNSTOWN TOWER ★ <b>125.75 (CTAF) 0</b>	GND CON <b>121.6</b>	CLNC DEL <b>126.85 235.775</b>	UNICOM <b>122.95</b>
------------------------	---	---	-------------------------	-----------------------------------	-------------------------



5 NM Holding Pattern		WUBOG		4900	REPT
4900 ← 229°		049° →		049°	
GP 3.00° TCH 39		3900		3900	RW05
		7.2 NM		5 NM	
CATEGORY	A	B	C	D	
LPV DA		2533-1	250 (300-1)		
LNAV/VNAV DA		2573-1	290 (300-1)		
LNAV MDA		2640-1	357 (400-1)		
CIRCLING	2700-1 416 (500-1)	2880-1 596 (600-1)	2880-1½ 596 (600-1½)	3000-2¼ 716 (800-2¼)	



RNAV (GPS) RWY 5

NE-4, 07 AUG 2025 to 04 SEP 2025

NE-4, 07 AUG 2025 to 04 SEP 2025