

WAAS  
CH **61113**  
**W33A**

APP CRS  
**334°**

Rwy Idg  
TDZE **2281**  
Apt Elev **2284**

RNAV (GPS) RWY 33

JOHN MURTHA JOHNSTOWN/CAMBRIA COUNTY (JST')

RNP APCH.

▼

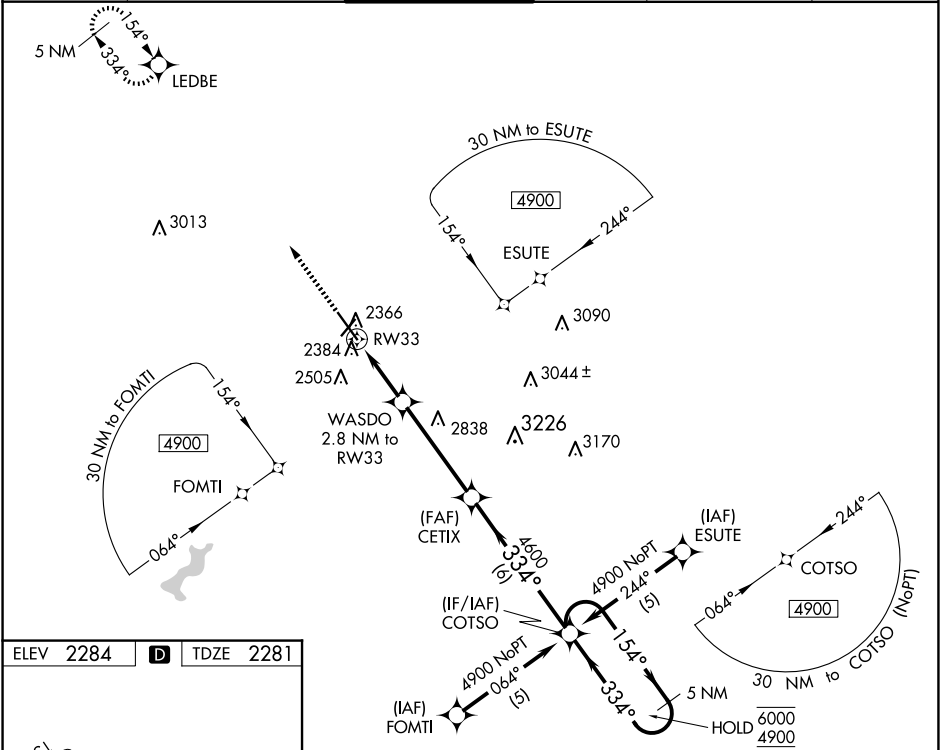
▲

Inop table does not apply to LNAV Cat D. For uncompensated Baro-VNAV systems, LNAV/VNAV NA below -19°C or above 54°C. For inop ALS increase LNAV/VNAV all Cats visibility to ½ SM and LNAV Cat C visibility to 1 SM.

MALSR

MISSED APPROACH:  
Climb to 4800 direct LEDBE and hold.

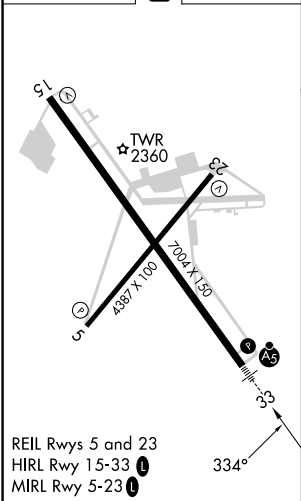
ATIS <b>118.325</b>	JOHNSTOWN APP CON ★ <b>121.2 299.2</b>	JOHNSTOWN TOWER ★ <b>125.75 (CTAF) 0</b>	GND CON <b>121.6</b>	CLNC DEL <b>126.85 235.775</b>	UNICOM <b>122.95</b>
------------------------	---	---	-------------------------	-----------------------------------	-------------------------



ELEV 2284

**D**

TDZE 2281



4800	LED BE	VGSI and RNAV glidepath not coincident (VGSI Angle 3.00/TCH 53).		5 NM Holding Pattern	
*LNAV only	*1 NM to RW33	WASDO 2.8 NM to RW33	CETIX 4600	154° → 6000 ← 334° 4900	
	RW33	3200*	4600		GP 3.00° TCH 58
	1 NM	1.8 NM	4.2 NM	6 NM	
CATEGORY	A		B	C	D
LPV DA	2481-½		200 (200-½)		
LNAV/ VNAV DA	2552-½		271 (300-½)		2552-¾ 271 (300-¾)
LNAV MDA	2640-½ 359 (400-½)		2640-⅝ 359 (400-⅝)		2640-1 359 (400-1)
CIRCLING	2700-1 416 (500-1)		2880-1 596 (600-1)		2880-1½ 596 (600-½)
					3000-2¼ 716 (800-2¼)