

WAAS CH 53429 W23A	APP CRS 229°	Rwy Idg 4387 TDZE 2284 Apt Elev 2284
--	------------------------	---

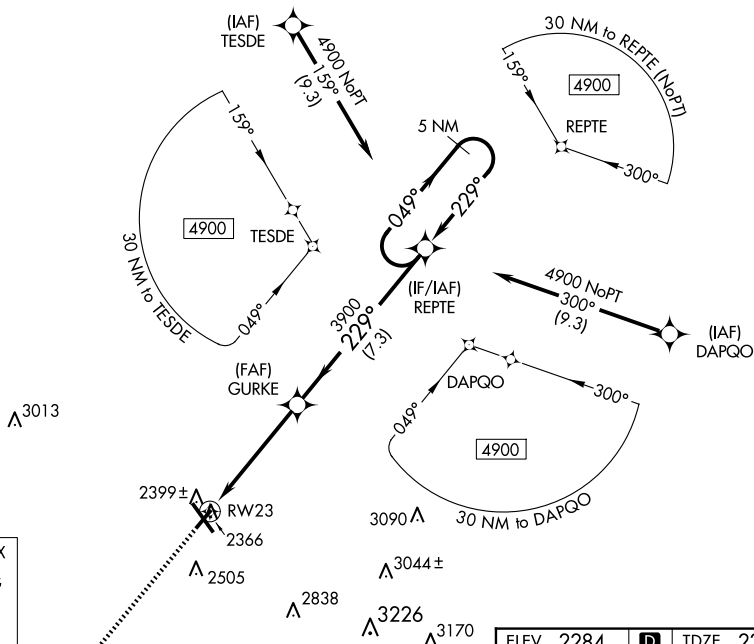
RNAV (GPS) RWY 23

JOHN MURTHA JOHNSTOWN/CAMBRIA COUNTY (JST)

T For uncompensated Baro-VNAV systems, LNAV/VNAV NA below -19°C (-2°F) or
A above 29°C (84°F). When local altimeter setting not received, procedure NA.
DME/DME RNP-0.3 NA. Rwy 23 helicopter visibility reduction below $\frac{3}{4}$ SM NA.

MISSED APPROACH: Climb to 4900 direct WUBOG and hold.

ATIS 118.325	JOHNSTOWN APP CON ★ 121.2 299.2	JOHNSTOWN TOWER ★ 125.75 (CTAF) 0	GND CON 121.6	CLNC DEL 126.85 235.775	UNICOM 122.95
-----------------	------------------------------------	--------------------------------------	------------------	----------------------------	------------------



MISSED APCH FIX

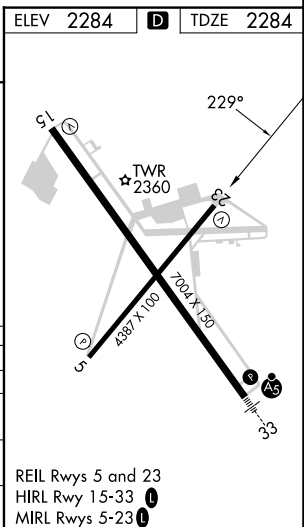
4900
↑

* LNAV only.

Diagram illustrating the GURKE 3900 VOR/DME station and its associated holding pattern. The diagram shows the station location relative to the RW23 runway and the REPTE VOR/DME station. Key distances and angles are marked:

- Distance from RW23 to GURKE 3900: 1.1 NM
- Distance from GURKE 3900 to REPTE: 7.3 NM
- Distance from RW23 to REPTE: 3.9 NM
- Holding Pattern: 5 NM
- Angles: 049° (outbound), 229° (inbound)
- GP 3.00° TCH 45

CATEGORY		A	B	C	D
LPV	DA	2534 ^{-3/4}		250 (300 ^{-3/4})	
RNAV/ VNAV	DA	2584-1		300 (300-1)	
RNAV MDA		2660-1		376 (400-1)	
C CIRCLING		2700-1 416 (500-1)	2880-1 596 (600-1)	2880-1½ 596 (600-1½)	3000-2¼ 716 (800-2¼)



JOHNSTOWN, PENNSYLVANIA
Amdt 2B 23APR20

JOHN MURTHA JOHNSTOWN/CAMBRIA COUNTY (JST)
40°19'N-78°50'W **RNAV (GPS) RWY 23**

NE-4, 07 AUG 2025 to 04 SEP 2025