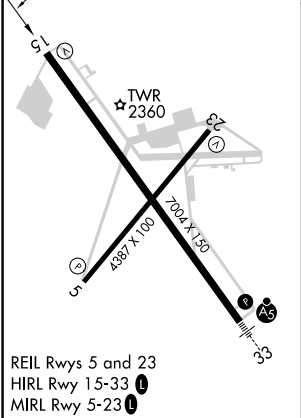
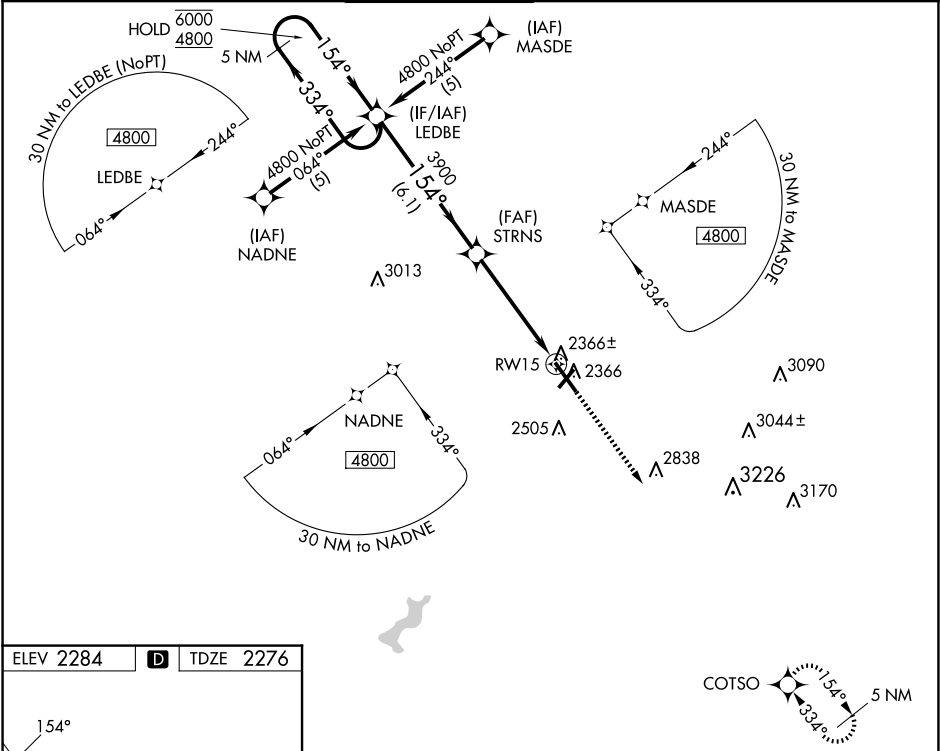


WAAS CH <b>53513</b> <b>W15A</b>	APP CRS <b>154°</b>	Rwy Idg TDZE <b>2276</b> Apt Elev <b>2284</b>
--	------------------------	---

RNAV (GPS) RWY 15

JOHN MURTHA JOHNSTOWN/CAMBRIA COUNTY (JST)

RNP APCH - GPS.		MISSED APPROACH: Climb to 4900 direct COTSO and hold.		
Baro-VNAV NA.				
ATIS <b>118.325</b>	JOHNSTOWN APP CON ★ <b>121.2 299.2</b>	JOHNSTOWN TOWER ★ <b>125.75 (CTAF) 0</b>	GND CON <b>121.6</b>	CLNC DEL <b>126.85 235.775</b>
				UNICOM <b>122.95</b>



5 NM Holding Pattern		LEDBE	STRNS	RWY 15
6000 ← 334° 4800 → 154°		3900	*1.1 NM to RWY 15	
GP 3.00° TCH 52		3900		
		6.1 NM	3.8 NM	1.1 NM
CATEGORY	A	B	C	D
LPV DA		2526-¾	250 (300-¾)	
LNNAV/VNAV DA		2595-1	319 (400-1)	
LNNAV MDA	2680-1	404 (400-1)	2680-1½ 404 (400-1½)	2680-1¼ 404 (400-1¼)
CIRCLING	2700-1 416 (500-1)	2880-1 596 (600-1)	2880-1½ 596 (600-1½)	3000-2¼ 716 (800-2¼)

NE-4, 07 AUG 2025 to 04 SEP 2025

NE-4, 07 AUG 2025 to 04 SEP 2025