

LOC I-JST
110.1

APP CRS
334°

Rwy Idg
6484
TDZE
2281
Apt Elev
2284

ILS or LOC RWY 33

JOHN MURTHA JOHNSTOWN/CAMBRIA COUNTY (JST)

DME required.
▼ Glide slope unusable beyond 5 degrees left of course.
▲ For inop ALS, increase S-LOC 33 Cat C/D visibility to ¾ SM.

MALSR

MISSED APPROACH: Climb to 3700 then climbing right turn to 4600 direct JST VOR/DME and hold, continue climb-in-hold to 4600.

ATIS
118.325

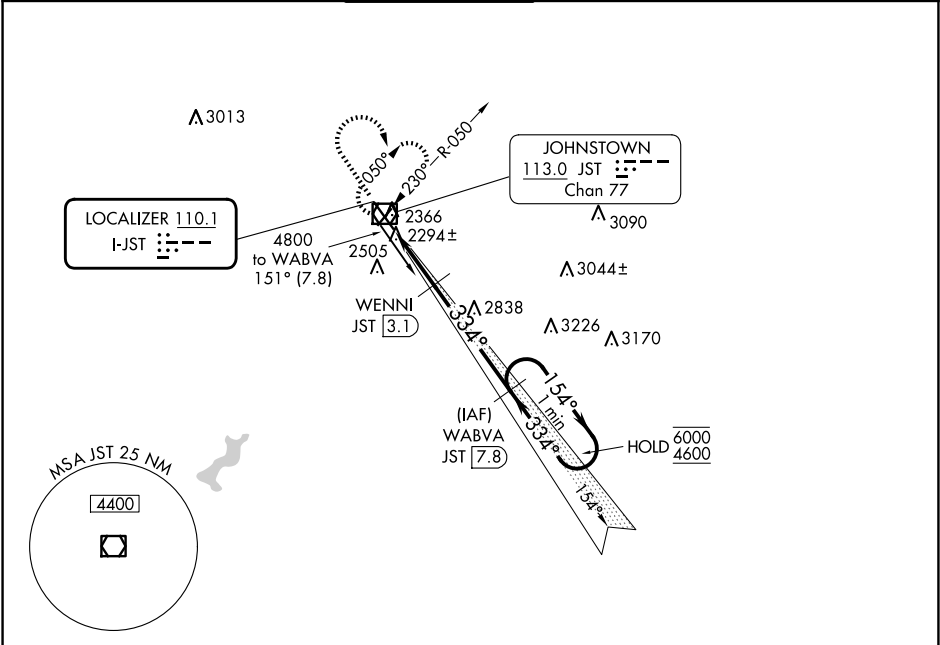
JOHNSTOWN APP CON ★
121.2 299.2

JOHNSTOWN TOWER ★
125.75 (CTAF) 0

GND CON
121.6

CLNC DEL
126.85 235.775

UNICOM
122.95



ELEV 2284 D TDZE 2281

REIL Rwy 5 and 23
HIRL Rwy 15-33 0
MIRL Rwy 5-23 0

3700 4600 JST

VGSI and ILS glidepath not coincident (VGSI Angle 3.00/TCH 53).

One Minute Holding Pattern

WABVA JST 7.8

WENNI JST 3.1

JST 0.6

JST 1.5

3140

334°

334°

6000 4600

GS 3.00° TCH 58

CATEGORY	A	B	C	D
S-ILS 33	2481-½	200 (200-½)		
S-LOC 33	2600-½	319 (400-½)		
CIRCLING	2700-1 416 (500-1)	2880-1 596 (600-1)	2880-1½ 596 (600-1½)	3000-2¼ 716 (800-2¼)

NE-4, 07 AUG 2025 to 04 SEP 2025

NE-4, 07 AUG 2025 to 04 SEP 2025