

| | | | |
|-------------|---------|----------|------|
| VOR/DME GAD | APP CRS | Rwy Ldg | 6802 |
| 112.3 | 052° | TDZE | 569 |
| Chan 70 | | Apt Elev | 569 |

VOR RWY 6

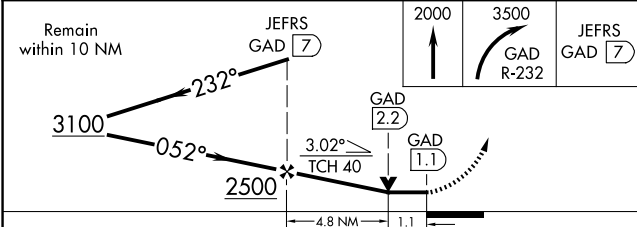
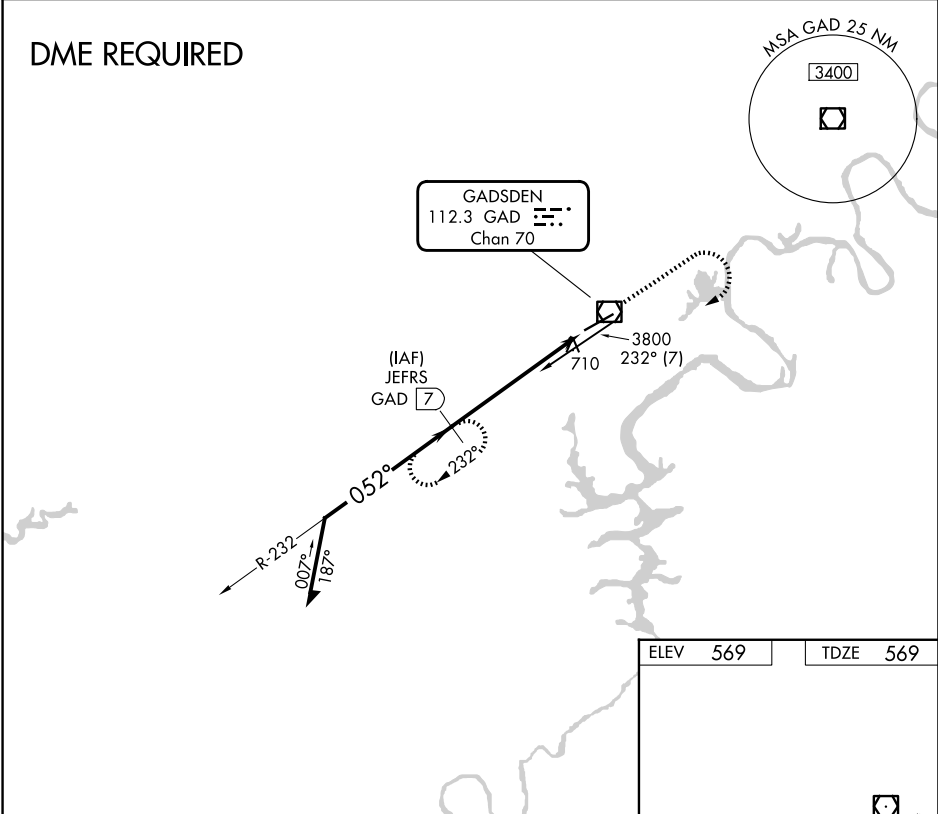
NORTHEAST ALABAMA RGNL (GAD)

⚠ When local altimeter setting not received, use Anniston altimeter setting and increase all MDAs 80 feet; increase S-6 Cat C/D visibility ¼ mile and Circling Cat C ½ SM. VDP NA when using Anniston altimeter setting. DME required.

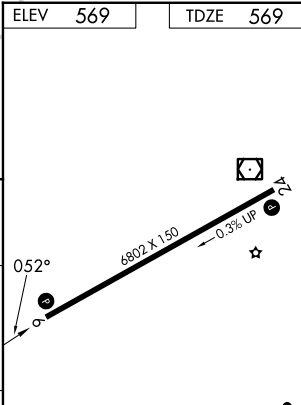


MISSED APPROACH: Climb to 2000 then climbing right turn to 3500 on GAD VOR/DME R-232 to JEFRS/7 DME and hold.

| | | | |
|----------|--------------------|--------------|-------------------------|
| AWOS-3PT | BIRMINGHAM APP CON | CLNC DEL | UNICOM |
| 127.825 | 125.45 279.65 | 120.05 257.7 | 122.725 (CTAF) 0 |

DME REQUIRED



| CATEGORY | A | B | C | D |
|----------|--------|-------------|-------------------------|-------------------------|
| S-6 | 960-1 | 391 (400-1) | 960-1½ | 391 (400-1½) |
| CIRCLING | 1100-1 | 531 (600-1) | 1440-2½ 871 (900-2½) | 1680-3 1111 (1200-3) |

| | | | | | |
|--|------|------|------|------|------|
| ELEV | 569 | TDZE | 569 | | |
|  | | | | | |
| HIRL Rwy 6-24  REIL Rws 6 and 24  | | | | | |
| FAF to MAP 5.9 NM | | | | | |
| Knots | 60 | 90 | 120 | 150 | 180 |
| Min:Sec | 5:54 | 3:56 | 2:57 | 2:22 | 1:58 |