

WAAS CH 65905 W24A	APP CRS 244°	Rwy Ldg TDZE 560 Apt Elev 569
--	------------------------	---

RNAV (GPS) RWY 24

NORTHEAST ALABAMA RGNL (GAD)

RNP APCH-GPS.

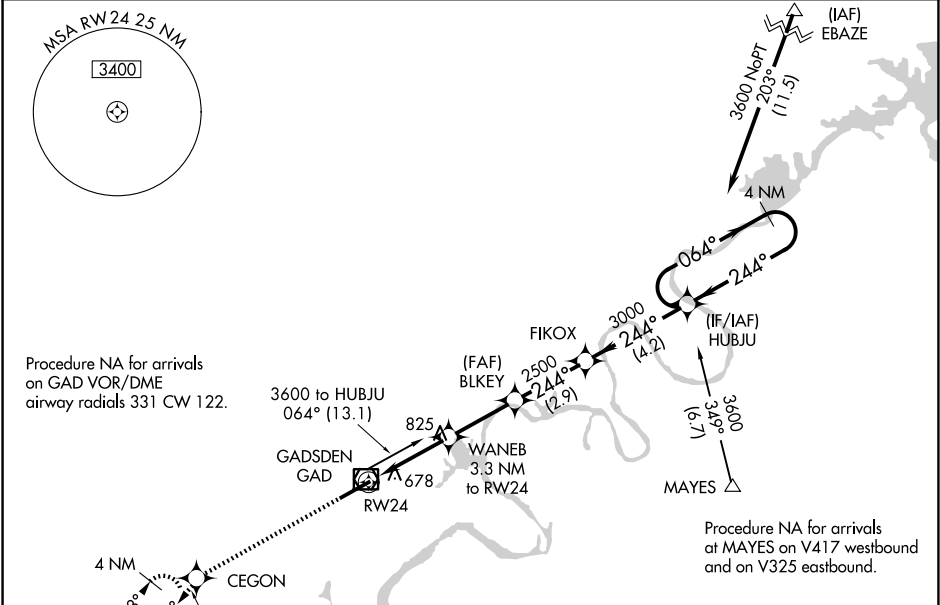
▼



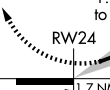
⚠

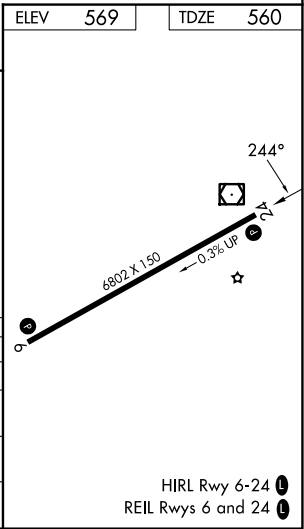
For uncompensated Baro-VNAV systems, LNAV/VNAV NA below -16°C or above 54°C .
When local altimeter setting is not received, use Anniston altimeter setting and increase LPV DA to 847 feet and all visibilities $\frac{1}{8}$ SM; increase LNAV/VNAV DA to 1082 feet and all visibilities $\frac{1}{8}$ SM; increase all MDAs 80 feet and LNAV visibility Cat C/D $\frac{1}{4}$ SM, and Circling visibility Cat C $\frac{1}{2}$ SM. Baro-VNAV and VDP NA when using Anniston altimeter setting.

MISSED APPROACH: Climb to 3600 direct CEGON and on track 221° to STAMP and hold, continue climb-in-hold to 3600.

AWOS-3PT 127.825	BIRMINGHAM APP CON 125.45 279.65	CLNC DEL 120.05 257.7	UNICOM 122.725 (CTAF) 0
----------------------------	--	---------------------------------	-----------------------------------



									
3600 ↑	CEGON 	tr 221°	STAMP △						
				BLKEY 2500	FIKOX	HUBJU	4 NM Holding Pattern		
				WANE6 3.3 NM to RW24			064° → 3600		
				1.7 NM to RW24			← 244°		
				RW24 	1620	2500	GP 3.00° TCH 43		
				1.7 NM	1.6 NM	2.7 NM	2.9 NM	4.2 NM	
CATEGORY		A		B		C		D	
LPV DA			781-¾		221 (300-¾)				
LNAV/VNAV DA			1016-1⅜		456 (500-1⅜)				
LNAV MDA	1140-1		580 (600-1)		1140-1⅝		580 (600-1⅝)		
CIRCLING	1140-1		571 (600-1)		1440-2½ 871 (900-2½)		1680-3 1111 (1200-3)		



SE-4, 07 AUG 2025 to 04 SEP 2025

SE-4, 07 AUG 2025 to 04 SEP 2025