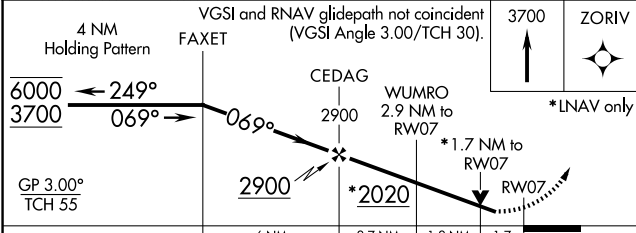
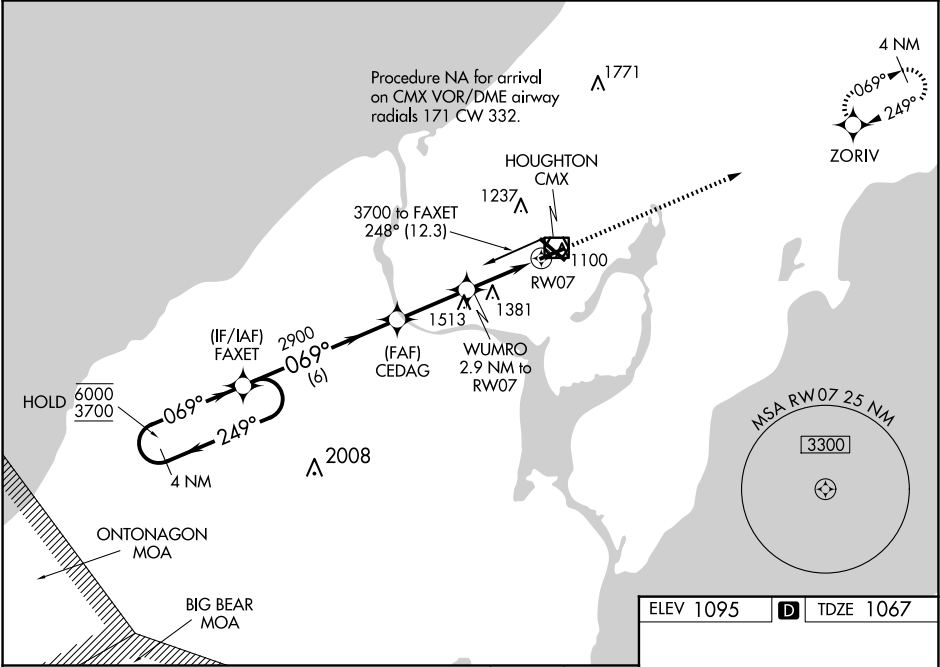


WAAS CH 58233 W07A	APP CRS 069°	Rwy Idg TDZE 1067 Apt Elev 1095
--	------------------------	---

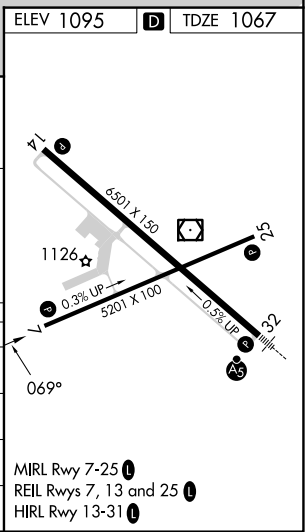
RNAV (GPS) RWY 7
HOUGHTON COUNTY MEML (CMX)

RNP APCH. <div><div></div><div></div></div> <p>Rwy 7 helicopter visibility reduction below ¾ SM NA. For uncompensated Baro-VNAV systems, LNAV/VNAV NA below -17°C or above 54°C.</p>		MISSED APPROACH: Climb to 3700 direct ZORIV and hold.
---	--	--

ASOS 125,675	MINNEAPOLIS CENTER 133.55 379.1	UNICOM 122.7 (CTAF) 0
------------------------	---	---------------------------------



CATEGORY	A	B	C	D
LPV DA	1431-1		364 (400-1)	
LNAV/VNAV DA	1598-1½		531 (600-1½)	
LNAV MDA	1640-1	573 (600-1)	1640-1½	573 (600-1½)
CIRCLING	1640-1	545 (600-1)	1700-1¾ 605 (700-1¾)	1820-2¼ 725 (800-2¼)



EC-1, 07 AUG 2025 to 04 SEP 2025

EC-1, 07 AUG 2025 to 04 SEP 2025