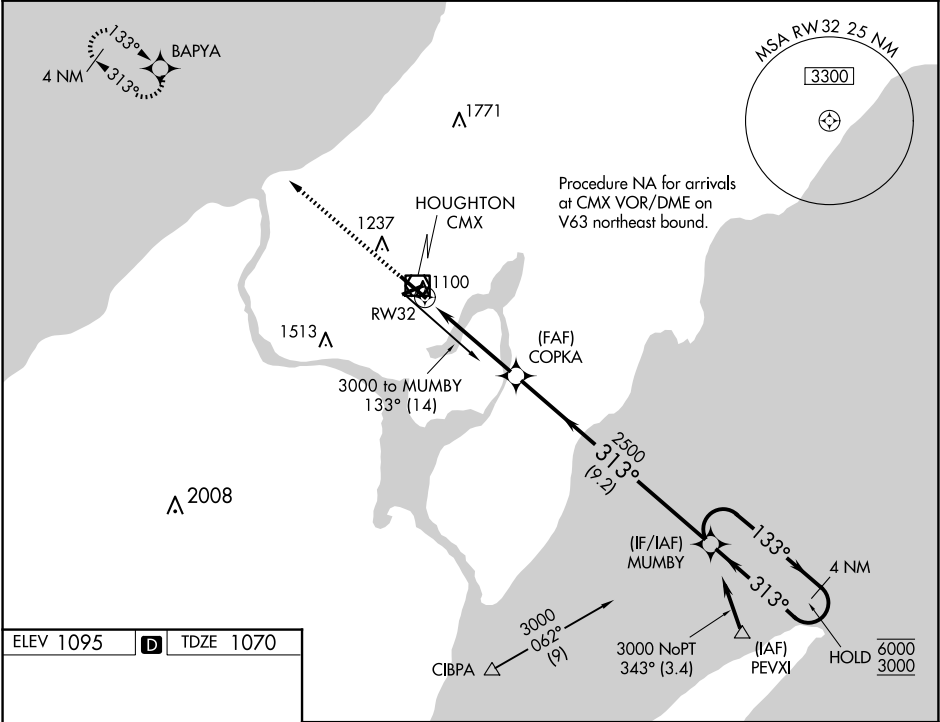


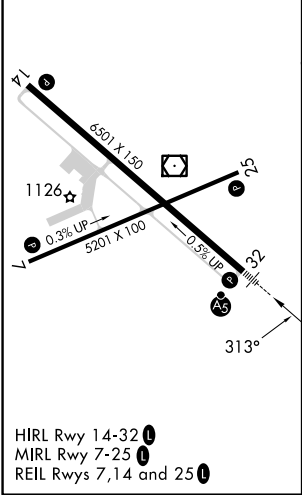
WAAS CH 45809 W32A	APP CRS 313°	Rwy Idg 6501 TDZE 1070 Apt Elev 1095
--	------------------------	---

RNAV (GPS) RWY 32
HOUGHTON COUNTY MEML (CMX)

RNP APCH - GPS.		MALSR	MISSED APPROACH: Climb to 3700 direct BAPYA and hold.
ASOS 125.675		MINNEAPOLIS CENTER 133.55 379.1	
		UNICOM 122.7 (CTAF)	



ELEV 1095	D	TDZE 1070
-----------	---	-----------



3700 ↑	BAPYA ✧	MUMBY 4 NM Holding Pattern			