

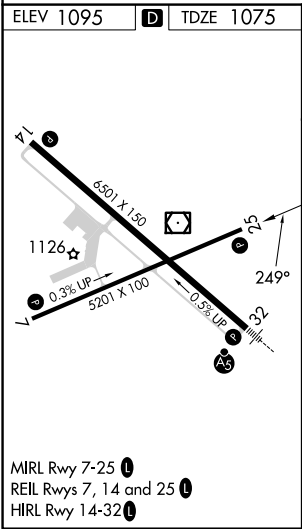
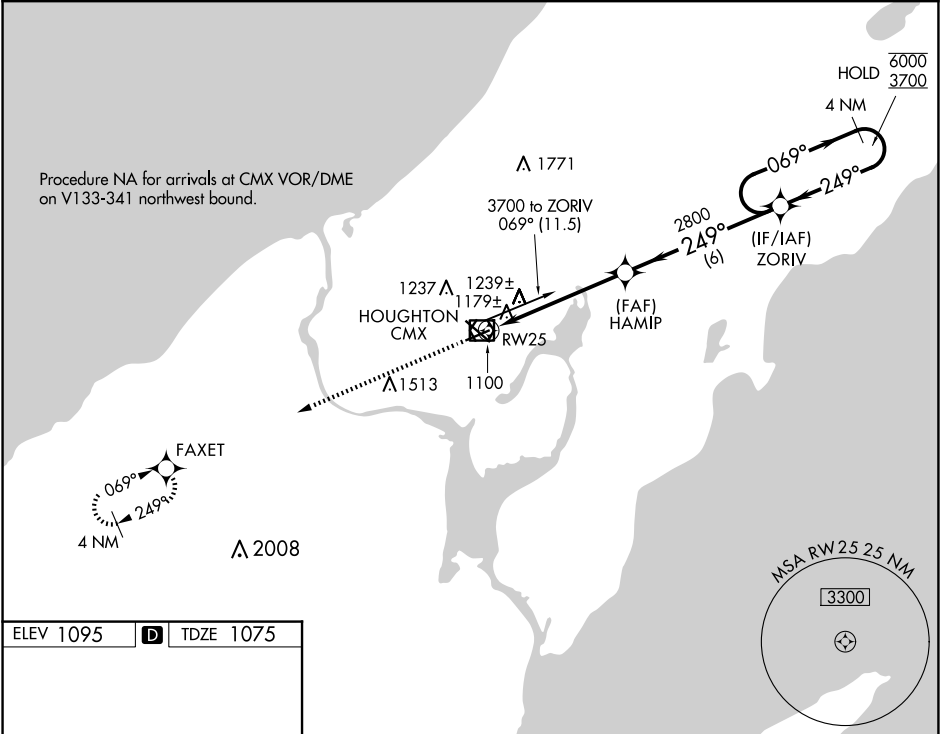
WAAS CH 86634 W25A	APP CRS 249°	Rwy Idg TDZE Apt Elev	5201 1075 1095
--	------------------------	-----------------------------	---

RNAV (GPS) RWY 25
HOUGHTON COUNTY MEML (CMX)

RNP APCH.

<p>▼ ▲</p> <p>Rwy 25 helicopter visibility reduction below ¾ SM NA.</p>	<p>MISSED APPROACH: Climb to 3700 direct FAXET and hold.</p>
---	--

ASOS 125.675	MINNEAPOLIS CENTER 133.55 379.1	UNICOM 122.7 (CTAF) 0
------------------------	---	---------------------------------



3700	FAXET	VGSI and descent angles not coincident (VGSI Angle 3.00/TCH 41).		4 NM Holding Pattern
1 NM to RW25		HAMIP	ZORIV	069° → 6000 ← 249° 3700
RW25		2800		
1 NM		4.3 NM	6 NM	
CATEGORY	A	B	C	D
LP MDA	1440-1		365 (400-1)	
LNAV MDA	1500-1	425 (500-1)	1500-1¼	425 (500-1¼)
C CIRCLING	1620-1 525 (600-1)	1660-1 565 (600-1)	1700-1¾ 605 (700-1¾)	1820-2¼ 725 (800-2¼)