

WAAS CH 93533 W14A	APP CRS 133°	Rwy Idg TDZE Apt Elev	6501 1095 1095
--	------------------------	-----------------------------	---

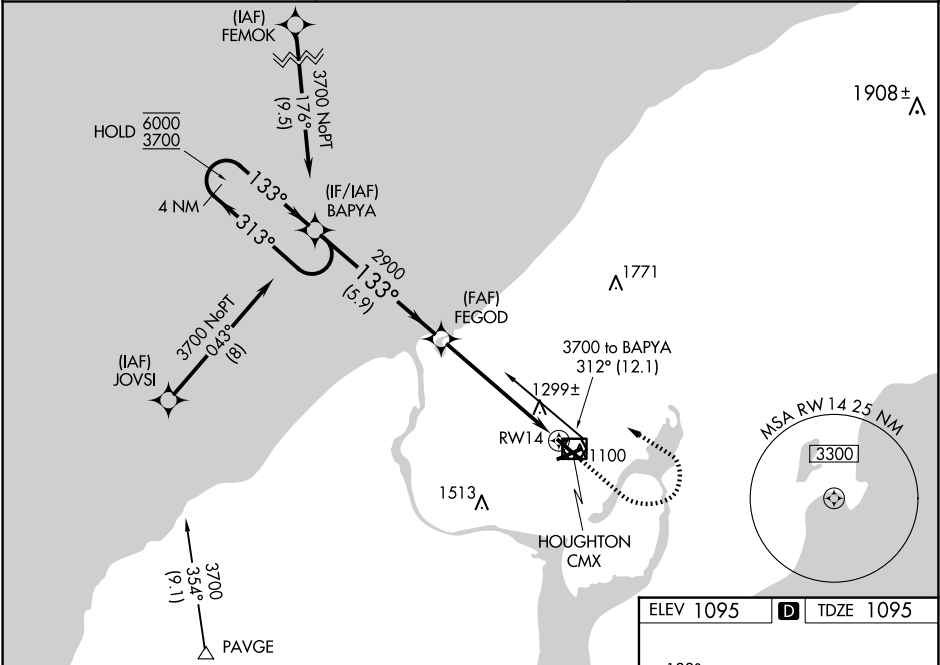
RNAV (GPS) RWY 14
HOUGHTON COUNTY MEML (CMX)

RNP APCH - GPS.

Rwy 14 helicopter visibility reduction below 3/4 SM NA.
For uncompensated Baro-VNAV systems,
LNAV/VNAV NA below -21°C or above 54°C.

MISSED APPROACH: Climb to 2400 then climbing left turn to 3700 direct BAPYA and hold.

ASOS 125.675	MINNEAPOLIS CENTER 133.55 379.1	UNICOM 122.7 (CTAF)
------------------------	---	-------------------------------



4 NM Holding Pattern

VGSI and RNAV glidepath not coincident (VGSI Angle 3.00/TCH 43).

BAPYA

FEGOD

2400 3700 BAPYA

GP 3.00° TCH 46

1.3 NM to RWY 14

RWY 14

5.9 NM 4.2 NM 1.3

CATEGORY	A	B	C	D
LPV DA	1414-7/8	319 (400-7/8)		
LNAV/VNAV DA	1626-1 1/2	531 (600-1 1/2)		
LNAV MDA	1560-1	465 (500-1)	1560-1 3/8	465 (500-1 3/8)
CIRCLING	1620-1 525 (600-1)	1660-1 565 (600-1)	1700-1 3/4 605 (700-1 3/4)	1820-2 1/4 725 (800-2 1/4)

ELEV 1095 TDZE 1095

MIRL Rwy 7-25
REIL Rws 7, 14 and 25
HIRL Rwy 14-32

EC-1, 07 AUG 2025 to 04 SEP 2025

EC-1, 07 AUG 2025 to 04 SEP 2025