

LOC/DME I-CMX	APP CRS	Rwy Idg	6501
<b>110.3</b>	<b>133°</b>	TDZE	<b>1095</b>
Chan <b>40</b>		Apt Elev	<b>1095</b>

LOC BC RWY 14

HOUGHTON COUNTY MEML (CMX)

DME required.

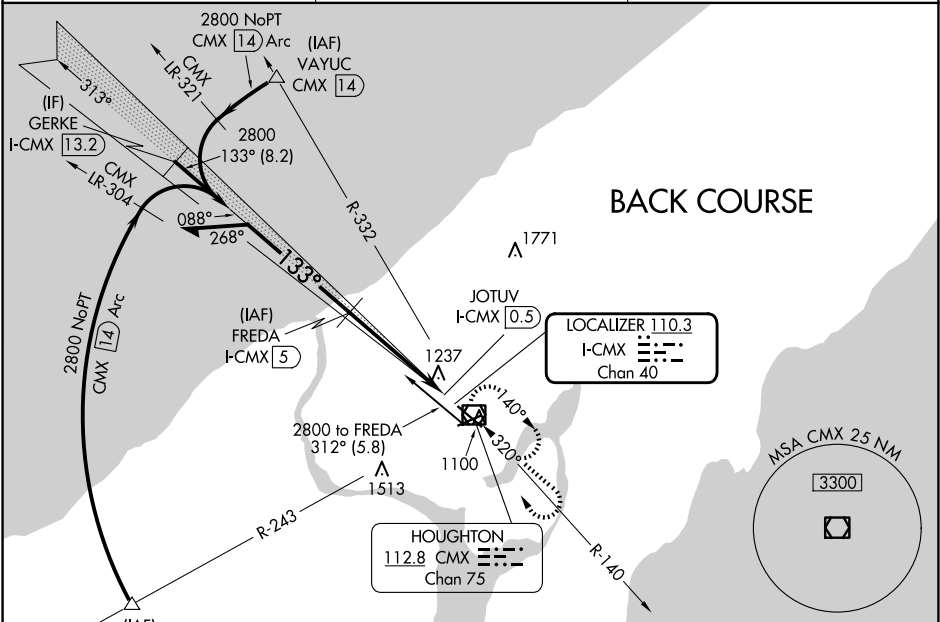
▼

▲

Rwy 14 helicopter visibility reduction below ¾ SM NA.  
Activate MIRLs Rwy 7-25 - CTAF.

MISSED APPROACH: Climb to 3100 then right turn direct CMX VOR/DME and hold.

ASOS	MINNEAPOLIS CENTER	UNICOM
<b>125.675</b>	<b>133.55 379.1</b>	<b>122.7 (CTAF) 0</b>



ELEV 1095	D	TDZE 1095
-----------	---	-----------

Remain within 10 NM

3100

CMX

313°

133°

2800

2800

Use I-CMX DME when on the localizer course.  
Disregard glide slope indications.

3.04°

TCH 43

3.9 NM

0.6

0.7

3100

CMX

1126

0.3% UP

5201 X 100

0.5% UP

32

AS

CATEGORY	A	B	C	D
S- LOC 14	1540-1	445 (500-1)	1540-1¼ 445 (500-1¼)	1540-1½ 445 (500-1½)
CIRCLING	1620-1 525 (600-1)	1660-1 565 (600-1)	1700-1¾ 605 (700-1¾)	1820-2¼ 725 (800-2¼)

MIRL Rwy 7-25  
REIL Rws 7, 14 and 25  
HIRL Rwy 14-32

EC-1, 07 AUG 2025 to 04 SEP 2025

EC-1, 07 AUG 2025 to 04 SEP 2025