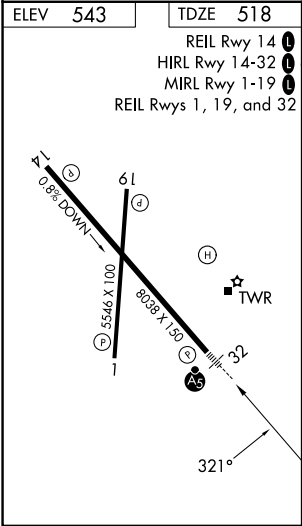
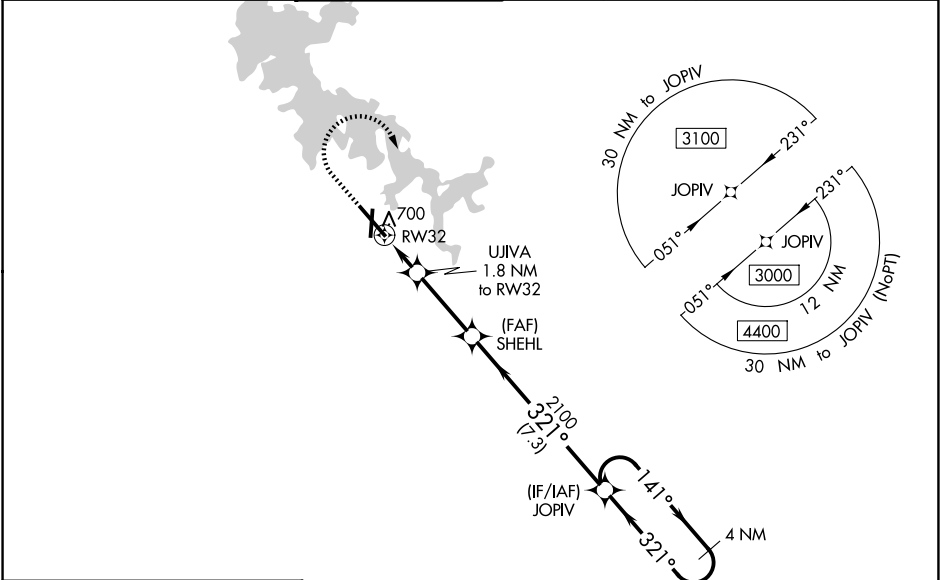





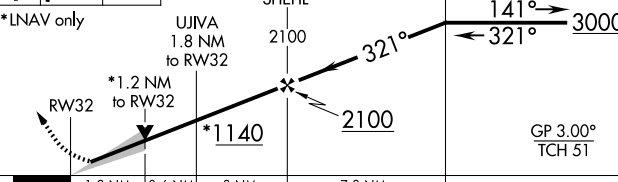
WAAS CH 93512 W32A	APP CRS 321°	Rwy Ldg TDZE 518 Apt Elev 543
--	------------------------	---

RNAV (GPS) RWY 32

SMYRNA (MQY)

<div><div></div><div></div></div> <div>For uncompensated Baro-VNAV systems, LNAV/VNAV NA below -16°C (4°F) or above 54°C (130°F). DME/DME RNP-0.3 NA. For inop MALSr when using Nashville Intl altimeter setting, increase LNAV/VNAV all Cats visibility to 1⅓ mile. When local altimeter setting not received, use Nashville Intl altimeter setting and increase LPV DA to 749 feet, LNAV/VNAV DA to 998 feet, and all MDA 40 feet; increase LNAV Cats C/D visibility ⅓ mile and increase Circling Cat C visibility ¼ mile. Baro-VNAV and VDP NA when using Nashville Intl altimeter setting.</div>				<div>MALSr</div> <div><div></div><div></div></div>	MISSED APPROACH: Climb to 1500 then climbing right turn to 3000 direct JOPIV and hold.	
AWOS-3PT 119.125	NASHVILLE APP CON 118.4 360.7	SMYRNA TOWER ★ 118.5 (CTAF) 0 233.1	GND CON 121.4	CLNC DEL 121.4	CLNC DEL 121.7 (When twr closed)	UNICOM 122.95



1500		3000		JOPIV		VGSI and RNAV glidepath not coincident (VGSI Angle 3.00/TCH 57).		4 NM Holding Pattern	
									
*LNAV only									
									
CATEGORY		A		B		C		D	
LPV DA				718-½		200 (200-½)			
LNAV/ VNAV DA				967-1		449 (500-1)			
LNAV MDA		960-½ 442 (500-½)				960-⅞ 442 (500-⅞)			
CIRCLING		1100-1 557 (600-1)		1200-1 657 (700-1)		1260-2 717 (800-2)		1480-3 937 (1000-3)	