

SMYRNA, TENNESSEE

AL-895 (FAA)

25219

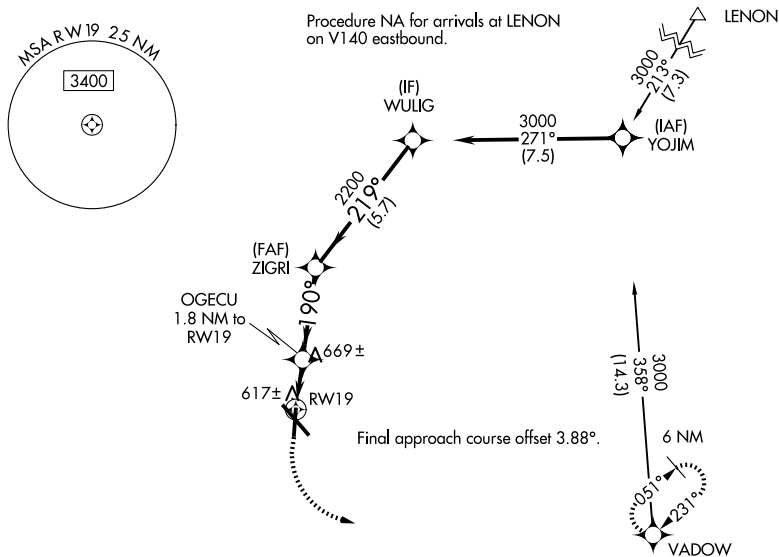
WAAS CH <b>42932</b> <b>W19A</b>	APP CRS <b>190°</b>	Rwy Ldg <b>5546</b> TDZE <b>521</b> Apt Elev <b>543</b>
--	------------------------	---

RNAV (GPS) RWY 19  
SMYRNA (MQY)

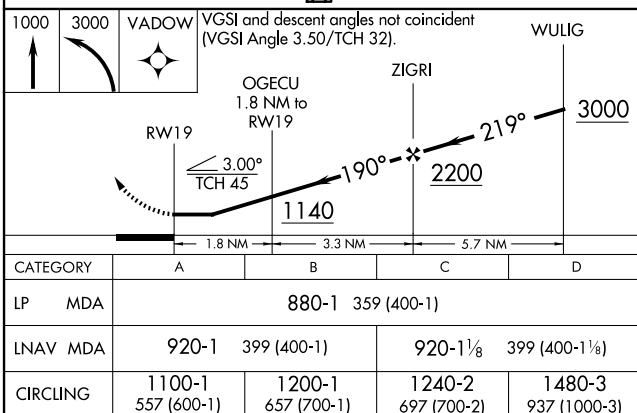
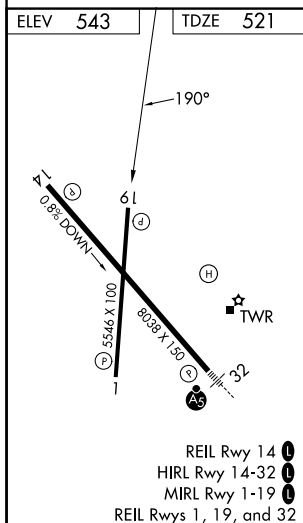
**A** DME/DME RNP-0.3 NA. Helicopter visibility reduction below  $\frac{3}{4}$  SM NA. When local altimeter setting not received, use Nashville Intl altimeter setting and increase all MDA 40 feet and increase LP and LNAV Cat C/D visibility  $\frac{1}{8}$  mile.

**MISSED APPROACH:** Climb to 1000 then climbing left turn to 3000 direct VADOW and hold.

AWOS-3PT 119.125	NASHVILLE APP CON 118.4 360.7	SMYRNA TOWER ★ 118.5 (CTAF) 0 233.1	GND CON 121.4	CLNC DEL 121.4	CLNC DEL 121.7 (When twr closed)	UNICOM 122.95
---------------------	----------------------------------	--	------------------	-------------------	--	------------------



Procedure NA for arrivals on SYI VOR/DME  
airway radials 046 CW 080.



SMYRNA, TENNESSEE

36°01'N-86°31'W

SMYRNA (MQY)

## RNAV (GPS) RWY 19

SE-1, 07 AUG 2025 to 04 SEP 2025

SE-1, 07 AUG 2025 to 04 SEP 2025