

VOR/DME OTK	APP CRS	Rwy Ldg
114.8	338°	8002
Chan 95		TDZE 201
		Apt Elev 203

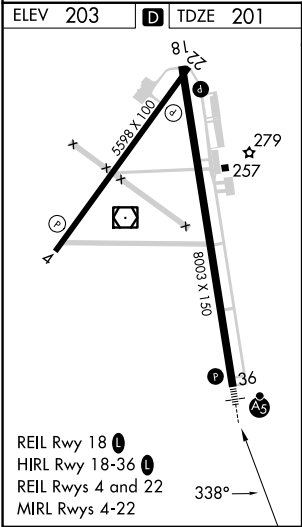
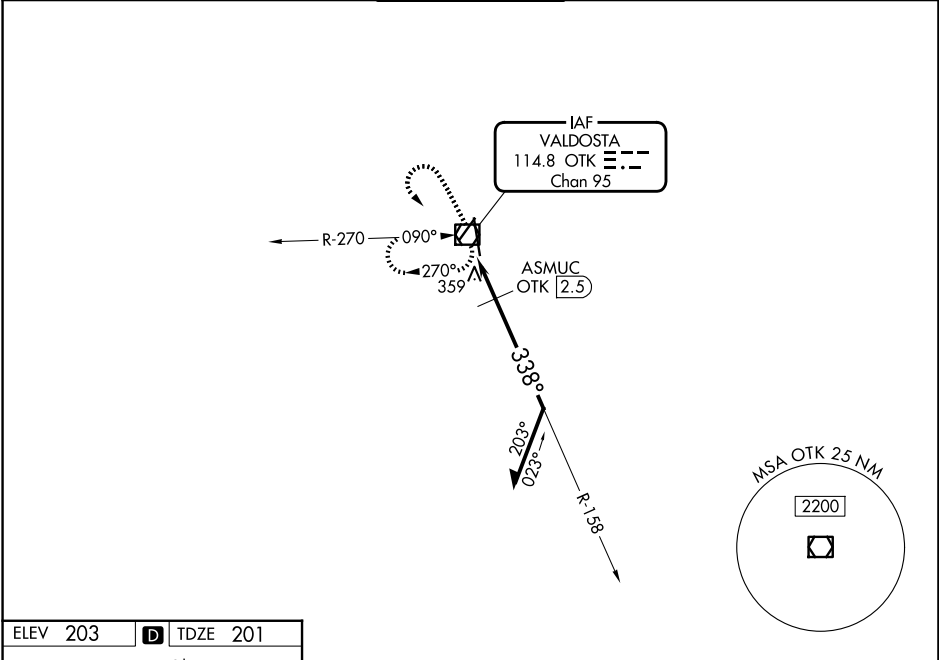
VOR RWY 36
VALDOSTA RGNL (VLD)

⚠ Rwy 36 helicopter visibility reduction below 1 SM NA. For inop ALS, increase S-36 Cats C and D visibility to 1½ SM. ASMUC fix minimums: increase S-36 C and D visibility to 1½ SM. Circling Rwy 4 and 22 NA at night. Inop table does not apply to S-36 Cats A and B and ASMUC fix minimums: Cat A and B. Straight-in and Circling Rwy 36 NA at night.

MALSR

MISSED APPROACH: Climb to 1200 then climbing left turn to 2000 direct OTK VOR/DME and hold, continue climb-in-hold to 2000.

ASOS	VALDOSTA APP CON ★	VALDOSTA TOWER ★	GND CON	UNICOM
126.225	126.6 285.6	128.35 (CTAF) 0	121.7	122.95



1200	2000	OTK	OTK VOR/DME	158°	1900	338°	780	1.7 NM
Remain within 10 NM								
ASMUC OTK 2.5								
CATEGORY	A	B	C	D				
S-36	780-1	579 (600-1)	780-1¼	579 (600-1¼)				
CIRCLING	780-1	577 (600-1)	900-2 697 (700-2)	1020-2¾ 817 (900-2¾)				
ASMUC FIX MINIMUMS								
S-36	620-1 419 (500-1)							
CIRCLING	660-1 457 (500-1)	700-1 497 (500-1)	900-2 697 (700-2)	1020-2¾ 817 (900-2¾)				

SE-4, 07 AUG 2025 to 04 SEP 2025

SE-4, 07 AUG 2025 to 04 SEP 2025