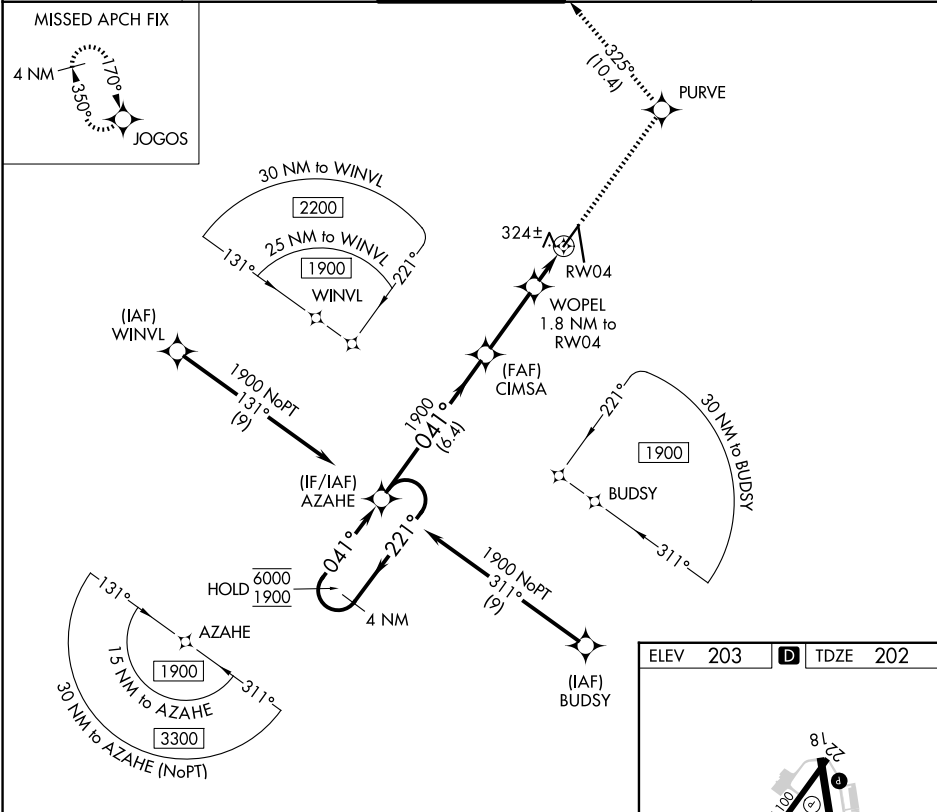


APP CRS	Rwy Ldg	5598
041°	TDZE	202
	Apt Elev	203

RNAV (GPS) RWY 4
VALDOSTA RGNL (VLD)

RNP APCH - GPS.	MISSED APPROACH: Climb to 3000 direct PURVE and on track 325° to JOGOS and hold.
▼ ▲ Rwy 4 helicopter visibility reduction below ¾ SM NA.	

ASOS 126.225	VALDOSTA APP CON ★ 126.6 285.6	VALDOSTA TOWER ★ 128.35 (CTAF) 0	GND CON 121.7	UNICOM 122.95
-----------------	-----------------------------------	-------------------------------------	------------------	------------------



4 NM Holding Pattern	AZAHE	CIMSA	3000 PURVE	Ir 325°	JOGOS
6000 ← 221°	041° →	1900	WOPEL 1.8 NM to RW04	1 NM to RW04	
			3.25° TCH 52	860	
	6.4 NM	3 NM	0.8 NM	1 NM	
CATEGORY	A	B	C	D	
LNVA MDA	580-1 378 (400-1)				
CIRCLING	640-1 437 (500-1)	700-1 497 (500-1)	900-2 697 (700-2)	1020-2¾ 817 (900-2¾)	

ELEV 203 D TDZE 202

REIL Rwy 18 0
HIRL Rwy 18-36 0
REIL Rwy 4 and 22
MIRL Rwy 4-22