

WAAS CH 86206 W36A	APP CRS 356°	Rwy Ldg 8002 TDZE 200 Apt Elev 203
--	------------------------	---

RNAV (GPS) RWY 36
VALDOSTA RGNL (VLD)

RNP APCH - GPS.	
-----------------	--

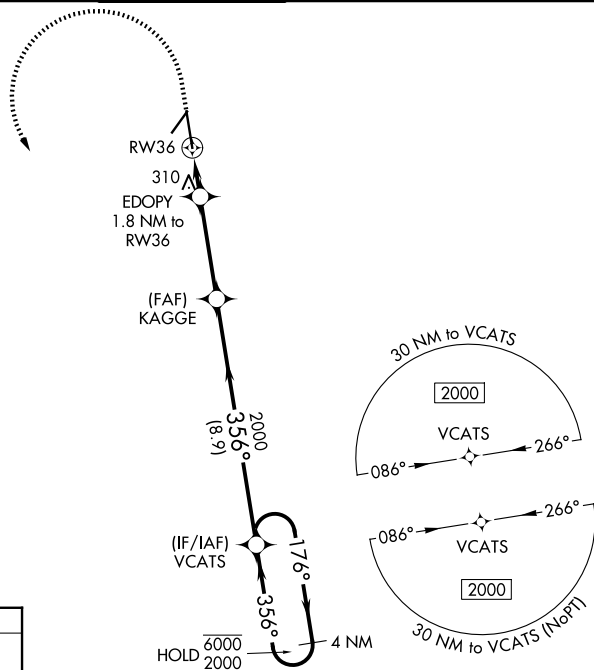


For uncompensated Baro-VNAV systems, LNAV/VNAV NA below -4°C or above 54°C. Rwy 36 helicopter visibility reduction below $\frac{3}{4}$ SM NA. For inop ALS, increase LPV and LNAV/VNAV all Cats visibility to $\frac{7}{8}$ SM and LNAV all Cats visibility to 1 SM.



MISSED APPROACH: Climb to 700 then climbing left turn to 2000 direct VCATS and hold.

ASOS 126.225	VALDOSTA APP CON ★ 126.6 285.6	VALDOSTA TOWER ★ 128.35 (CTAF) L	GND CON 121.7	UNICOM 122.95
------------------------	--	--	-------------------------	-------------------------



ELEV 203	D	TDZE 200
----------	----------	----------

