

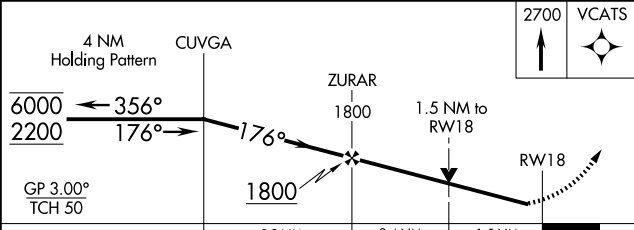
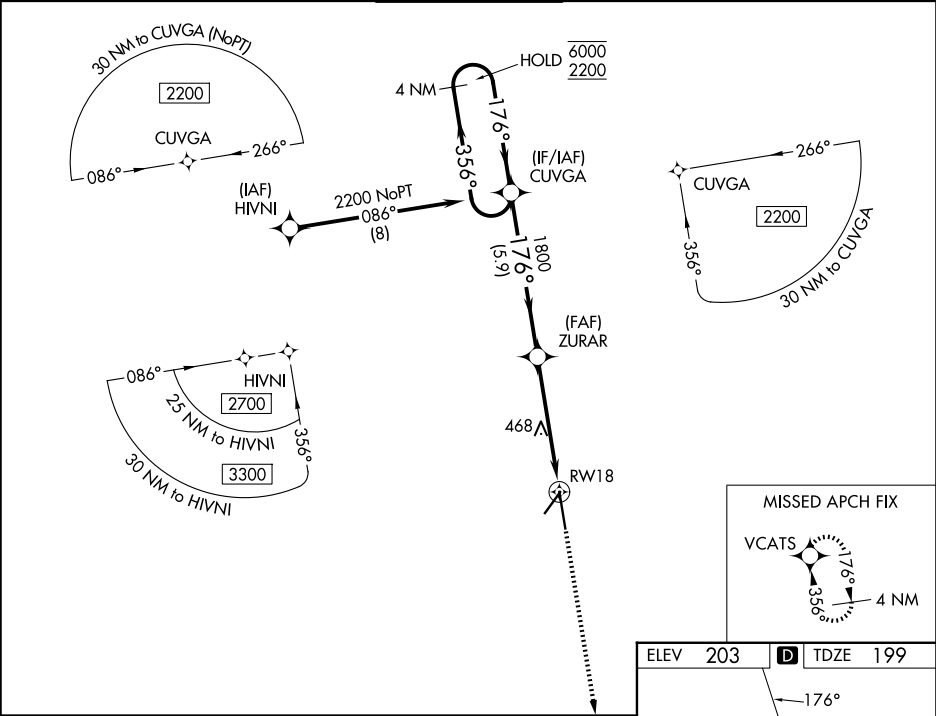
WAAS CH 87101 W18A	APP CRS 176°	Rwy Ldg TDZE 199 Apt Elev 203
--	------------------------	---

RNAV (GPS) RWY 18

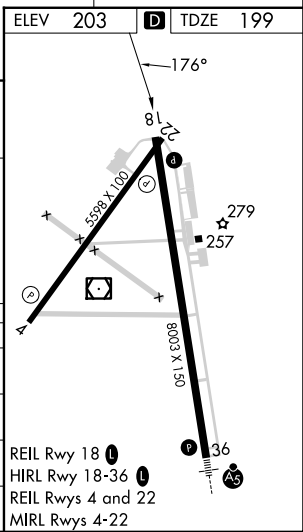
VALDOSTA RGNL (VLD)

RNP APCH - GPS.	<div><div>▼</div><div>▲</div></div> <div>Rwy 18 helicopter visibility reduction below ¾ SM NA. For uncompensated Baro-VNAV systems, LNAV/VNAV NA below -4°C or above 54°C.</div>	MISSED APPROACH: Climb to 2700 direct VCATS and hold.
-----------------	--	---

ASOS 126.225	VALDOSTA APP CON ★ 126.6 285.6	VALDOSTA TOWER ★ 128.35 (CTAF) 0	GND CON 121.7	UNICOM 122.95
------------------------	--	--	-------------------------	-------------------------



CATEGORY	A	B	C	D
LPV DA		454-¾	255 (300-¾)	
LNAV/VNAV DA		458-¾	259 (300-¾)	
LNAV MDA	720-1	521 (600-1)	720-1½	521 (600-1½)
CIRCLING	720-1	517 (600-1)	900-2 697 (700-2)	1020-2¾ 817 (900-2¾)



SE-4, 07 AUG 2025 to 04 SEP 2025

SE-4, 07 AUG 2025 to 04 SEP 2025