

WAAS CH 42700 W28A	APP CRS 281°	Rwy Idg TDZE Apt Elev	6003 85 85
--	------------------------	-----------------------------	---------------------------------------

RNAV (GPS) RWY 28

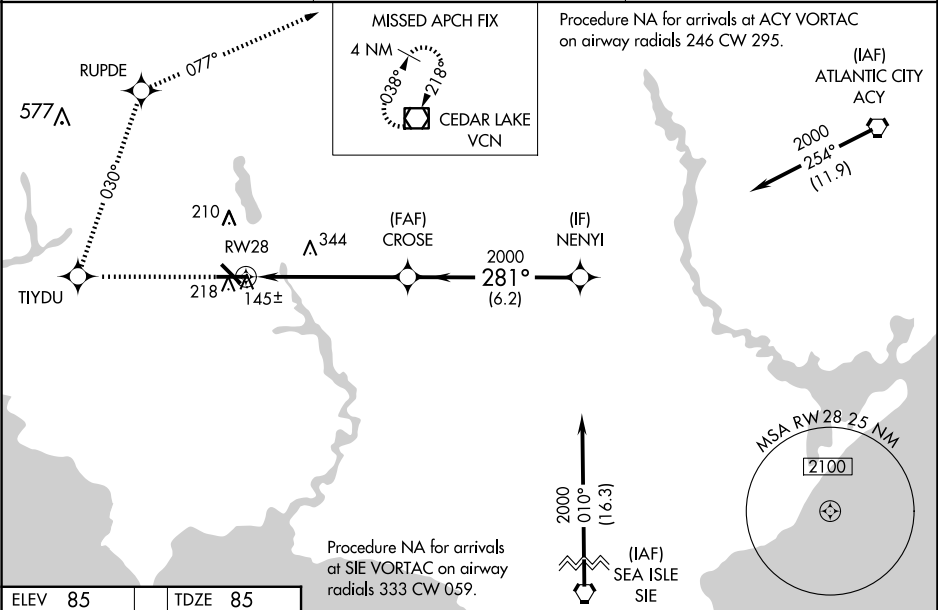
MILLVILLE MUNI (MIV)

RNP APCH-GPS.

▼ For uncompensated Baro-VNAV systems, LNAV/VNAV NA below -15°C or above 54°C. When local altimeter setting not received, use Atlantic City altimeter setting and increase all DA/MDA 60 feet; increase LNAV/VNAV all Cats, LNAV Cats C/D and Circling Cat C visibility ¼ mile. VDP and Baro-VNAV NA when using Atlantic City altimeter setting.

MISSED APPROACH: Climb to 2000 direct TIYDU and right turn on track 030° to RUPDE and right turn 077° track to VCN VOR/DME and hold.

ASOS 119.6	ATLANTIC CITY APP CON 124.6 327.125	UNICOM 123.0 (CTAF) 0
----------------------	---	---------------------------------



	2000	TIYDU	tr 030°	RUPDE	tr 077°	VCN	VGSI and RNAV glidepath not coincident (VGSI Angle 3.00/ TCH 29)	
	GP 3.00° TCH 45							
	CATEGORY	A		B	C	D		
	LPV DA	344-1		259 (300-1)				
	LNAV/VNAV DA	405-1		320 (400-1)				
	LNAV MDA	640-1	555 (600-1)		640-1 ½ 555 (600-1 ½)	640-1 ¾ 555 (600-1 ¾)		
	CIRCLING	640-1	555 (600-1)		660-1 ½ 575 (600-1 ½)	660-2 575 (600-2)		
	MIRL Rwy 10-28 and 14-32							