

WAAS CH 53723 W10A	APP CRS 101°	Rwy Idg TDZE Apt Elev	6003 74 85
--	------------------------	-----------------------------	---------------------------------------

RNAV (GPS) RWY 10
MILLVILLE MUNI (MIV)

RNP APCH-GPS.

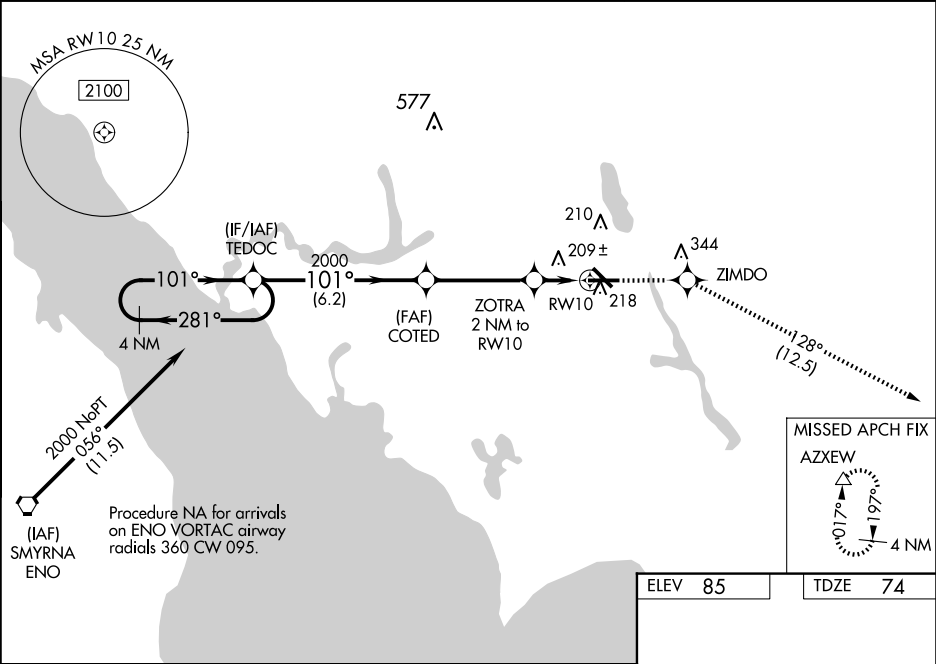
For uncompensated Baro-VNAV systems, LNAV/VNAV NA below -15°C or above 54°C. When local altimeter setting not received, use Atlantic City altimeter setting; increase LPV DA to 330 feet; LNAV/VNAV DA to 571 feet and visibility ¼ SM; increase all MDAs 60 feet and visibility Cat C and D ¼ SM. Baro-VNAV and VDP NA when using Atlantic City altimeter setting. For inop MALSR when using Atlantic City altimeter setting, increase LNAV/VNAV all Cat visibility to 1⅝.

MALSR



MISSED APPROACH: Climb to 2000 direct ZIMDO and on track 128° to AZXEW and hold.

ASOS 119.6	ATLANTIC CITY APP CON 124.6 327.125	UNICOM 123.0 (CTAF) 0
----------------------	---	---------------------------------



4 NM Holding Pattern		TEDOC	COTED	2000	ZIMDO	tr 128°	AZXEW
2000 ← 281°		101° →	2000	ZOTRA 2 NM to RW10	1.1 NM to RW10		
GP 3.00° TCH 52		101°	760				
6.2 NM		3.9 NM	0.9 NM	1.1 NM			
CATEGORY	A	B	C	D			
LPV DA	274-1½		200 (200-½)				
LNAV/VNAV DA	515-1		441 (500-1)				
LNAV MDA	460-½ 386 (400-½)		460-⅝ 386 (400-⅝)				
CIRCLING	520-1 435 (500-1)		580-1 495 (500-1)		660-1½ 575 (600-1½)		660-2 575 (600-2)

